

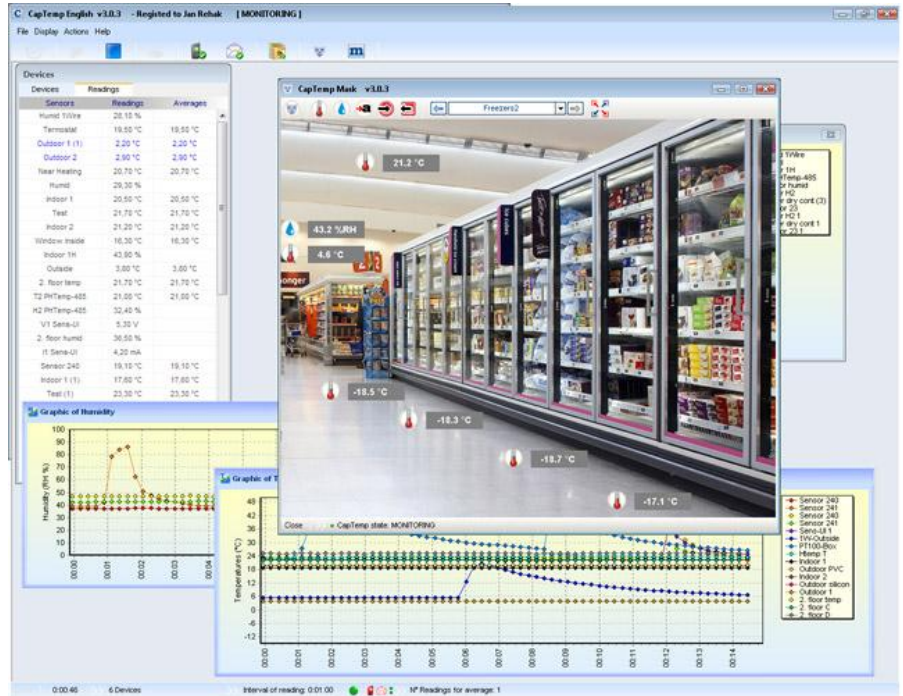
# CapTemp

Sensor data acquisition and analysis software for food and other industries

CapTemp and MonTemp is a pair of utilities to monitor production processes. The programs can supervise all HW group products (temperature and humidity sensors, contacts, etc) as well as products by other manufacturers.

CapTemp logs the readings into an internal database, displays several most recent ones, and processes conditions and alarms. Alerts to readings within an alarm range are sent by e-mail, or by a SMS via a GSM modem connected to the PC.

MonTemp subsequently processes data stored in the database, generates graphical reports, histograms, and ISO or HACCP quality assurance protocols.



- CapTemp supports Poseidon, Damocles and I/O Controller products
- Well-designed graphical environment
- Alarm alerts by e-mail or by SMS sent through a GSM modem
- Supports conditions and rules for simple control tasks
- Evaluation version functions for 21 days without restrictions

## Suitable CapTemp applications

- CapTemp offers the technologists an immediate overview of the environment in a technological process, including its history.
- CapTemp is a simple software with hundreds of applications in the pharmaceutical and food industries.
- CapTemp is suitable for monitoring sensors at a single site, using a PC at the technologist's desk.

**CapTemp supports**

- ✓ Windows interface
- ✓ Simple correlation engine
- ✓ Storing data in a database

**Alarm reaction:**

- ✓ Send an e-mail
- ✓ Send a SMS
- ✓ Activate an IP relay

## Intended users

- **Bakeries:** Production process monitoring for certification and process optimization purposes.
- **Freezing plants:** Storage temperature monitoring, energy savings through optimization.
- **Food processing industry:** Environment monitoring, HACCP compliance reports.
- **Food storages:** Storage environment monitoring, HACCP certification compliance reports.
- **Supermarkets:** Optimization of systems for monitoring various storages and coolers.
- **Hospitals:** Monitoring the storages of medicaments and blood products. Alarms upon failures.
- **Pharmacies:** Simple system for certification of pharmaceuticals storage processes.

## Basic functions

### Capturing sensor readings

- Supports HW group product lines (Poseidon, Damocles, I/O Controller)
- Calculates averages from the captured values
- Color-coded device status
- Sensor reading can be validated with an external input (contact / needle thermometers)



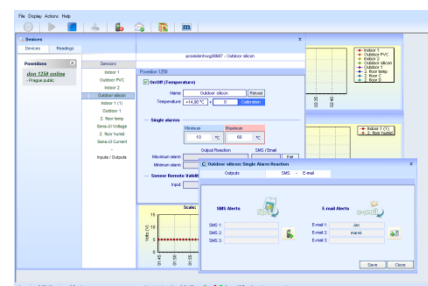
### Graphical display of the readings

- MonTemp can graph current and historic values
- Comments can be added to the readings and displayed in graphs
- Values can be plotted in histograms
- Graphs can be printed or exported as images



### Alarming

- Alert to a sensor reading out of range
- Alert to a sensor disconnection / failure
- Alert redirection to e-mail or a pop-up window
- Alerts can be sent as text messages (SMS) via a GSM modem
- Alarms are independent and linked to individual sensors



### Rules and conditions

- CapTemp enables advanced alarming based on a group of conditions
- CapTemp can react to a sensor in alarm by closing/opening a contact
- CapTemp can perform conditional actions, e.g. measure a temperature when a button is pressed (contact closed), or when one of several buttons is pressed
- Sensors can be grouped into logical groups

### Data processing in other applications

- Data can be exported to MS Excel

### Warnings and signaling

- Option to control outputs manually
- Alarm delay option, minimum output hold time
- Sensor calibration option
- **Alerts to unexpected situations:** Sensor not found / Reading out of range / Reading OK / Reading out of tolerance
- **Signaling outputs:** E-mail, SMS, playing a sound, activating a relay over the network

#### Product ordering numbers

600 325	CapTemp F1	CapTemp license limited to 20 sensors, no GSM modem support (no SMS alerts)
600 326	CapTemp GF1	CapTemp license limited to 20 sensors, GSM modem support (SMS alerts)
600 327	CapTemp GF2	CapTemp license limited to 50 sensors, GSM modem support (SMS alerts)