

# Starting Guide - Poseidon 3266 THset

*First steps with temperature, humidity and open door measuring*

## Poseidon 3266 THset package contains:

- Poseidon model 3266 [600 252]
- Poseidon T-Box2 [600 280]
- Temperature probe Temp-1Wire 3m [600 005]
- Humidity probe Humid-1Wire 3m [600 279]
- Door contact [600 119]
- Power adapter 12V [600 080]
- „Starting Guide“, CD with documentation, manual and Software



## 1) Connecting of Poseidon 3266 THset

**1.1)** Check DIP switch. Installation position has to be same like in the picture (DIP1=Off, DIP2=Off).

**1.2)** Four inputs are designed for the contact connecting. Connect the door sensor – part of the start set.

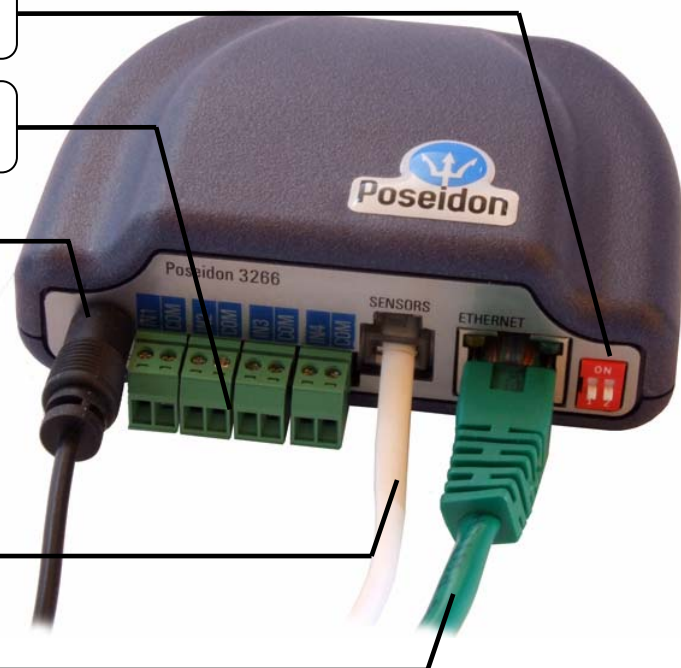
**1.3)** Connect the power adapter to power socket (230 / 110V) and connect it to Poseidon power connector.



**1.4)** Connect temperature and humidity sensors to T-Box2 switch.

**1.5)** Connect the cable of T-Box2 switch into SENSORS (RJ12) connector, the connector must click.

**1.6)** Connect Poseidon to Ethernet (direct cable to Switch, crossed to PC)



## 2) IP address configuration - UDP Config

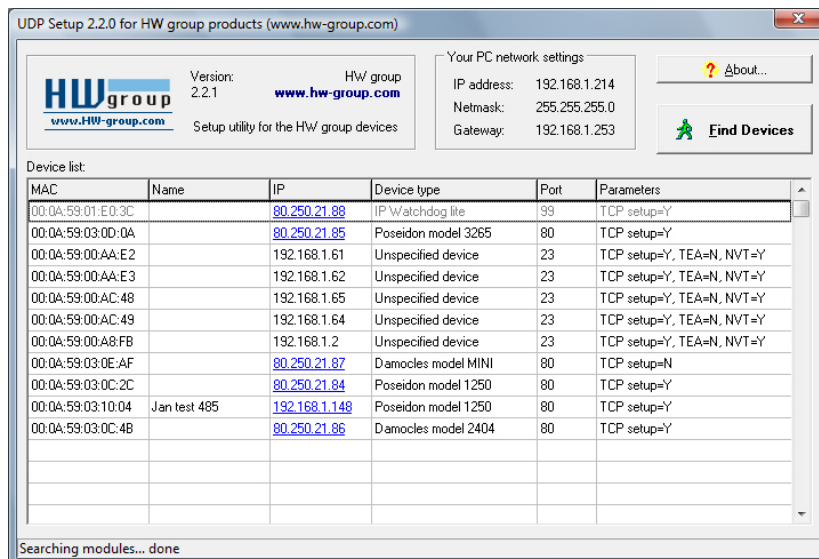
UDP Config start-up file is located in root of supplied CD; latest version can be found on our web: [www.HW-group.com](http://www.HW-group.com), follow **Poseidon 3266** link.

- Click the icon to run **UDP Config** program – it will automatically search for connected devices

In case the device was not connected to network during **UDP Config** start-up, you can easily click the **Find Devices** button to repeat the search again.

The Program will search for devices on your local network. The Poseidon identifies them according to MAC address which is printed on label located on bottom part of each device.

Double click on MAC address will open basic settings dialog window.

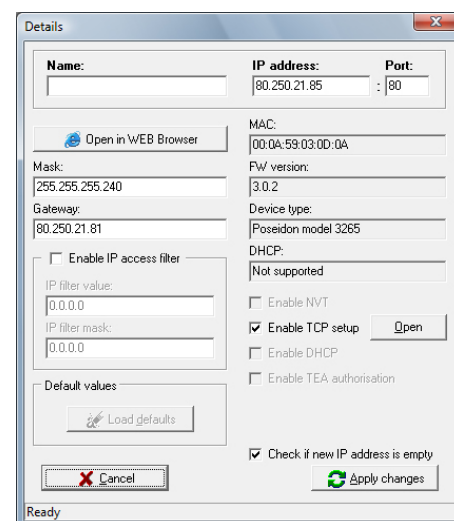


MAC	Name	IP	Device type
00:0A:59:01:E0:3C		80.250.21.88	IP Watchdog lite
00:0A:59:03:0D:0A		80.250.21.85	Poseidon model 3265

In this moment it is necessary to setup network parameters.  
*Notice: In case you do not have following information, contact your network administrator*

- IP address
- HTTP Port
- Mask
- Gateway IP address
- Name of your device - optional

Do not forget to click **Apply Changes** button to save new values to Poseidon memory



**Note:** to setup IP address you can use as optional:

- Hercules (/Hercules.exe)
- RS-232 serial port (any terminal, DIP1=ON, 9600 8N1)

### 3) Poseidon configuration – Web browser

- Enter IP address of the device to your web browser address bar or run **UDP Config** and click to the IP address.

### 3.2) WWW page Poseidon 3266

**Dry Contact Inputs**

Name	Number	Current Value	Alarm Alert
Binary 1	I1	0 (Off)	Disabled
Binary 2	I2	1 (On)	Disabled
Binary 3	I3	0 (Off)	Disabled
Binary 4	I4	0 (Off)	Disabled

**Sensors**

Name	ID	Current Value	Safe Range	Alarm Alert
Sensor 240	39680	26.5 °C	10.0 .. 60.0	Disabled

Device name: Poseidon  
 Web Configuration: [Flash Setup](#)  
 Terminal Configuration (TCP Setup): Connect with Telnet to [192.168.1.58 Port 99](#)  
 Firmware: Version: [1.0.3 \(update\)](#) / [MIB](#) / [XSD](#)

For more information try [www.HW-group.com](#)

- **Current Value** – current value of connected sensor. „-999.9“ value means that the sensor is not available or is initializing after start.
- **Safe Range** – Sensor’s value range out of Alarm.
- **Alarm Alert** – defined for sensor, monitoring of safe range switched on and where alert of exceeding “Safe Range” and Alarm status are sent (inputs for contacts).
- „**For more information ..**“ – Contact for service organization, you can change it from „Telnet setup“.

### 3.3) Reading of current values

- **XML – values.xml** file, format described using XSD – for download on the main page, detailed comments of XML structure are in the manual.
- **SNMP** – describing file of **poseidon.mib** you can download from main page, Standard SNMP port 161 and 162 can be configured in Flash setup.
- **Modbus/TCP**– structure description is in the manual or in application examples. Standard port 502 is opened for reading.

## 4) Flash Setup configuration

After the click „**Flash Setup**“ link from WWW page, the graphic configuration version in browser is opened. **Macromedia Flash player** in web browser must be installed. If you don't have it, you can download his last version from Internet or find it on CD:

[\Poseidon\install\\_flash\\_player\\_7.msi](#)

Name	Number	Current Value	Alarm Alert
Binary 1	1	0 (Off)	Active if Off
Binary 2	2	1 (On)	Inactive
Binary 3	3	0 (Off)	Active if On
Binary 4	4	0 (Off)	Inactive

Name	Sensor ID	Current Value	SafeRange	Alarm Alert
Sensor 240	39680	24.0 °C	10.0 .. 60.0	Inactive

Refresh

Values reloaded 0 times. Reload values every 5 [s] Start

### Using Flash setup you can:

- Setup names of sensors, „Safe Range“ for alarm and where Alarm alert will be sent.
- Monitor current values, refresh in seconds.
- Select temperature units (°C, °F, °K)
- Setup actual time and NTP server for synchronize the time.
- Setup SNMP parameters (Community names & rights) and define where to send SNMP Traps
- Setup Alarm alert via email and test it.
- Setup security elements: Names and password, ranges of IP addresses



More information can be found in manual or on [www.HW-group.com](http://www.HW-group.com).