

EZL-300W Lite User's Manual

Version 0.9



 Sollae Systems Co., Ltd.

TABLE OF CONTENTS

1. OVERVIEW	5 -
1.1. Overview	5 -
1.2. Components	5 -
1.3. Specifications	6 -
1.4. Interface Specifications	6 -
1.4.1. Power	6 -
1.4.2. RS232 Dsub Connector	7 -
1.4.3. Status LED	8 -
1.4.4. Wireless LAN Interface	8 -
2. INSTALLATION AND TEST OPERATION	9 -
2.1. Installation	9 -
2.1.1. Checking Communication Environment	10 -
2.1.2. Configuring the Wireless LAN	10 -
2.1.3. Connecting to the Network	10 -
2.1.4. Setting Environment Variables	11 -
2.2. Test Operation	11 -
2.2.1. Changing the IP Address of the PC	11 -
2.2.2. Installing the AP	11 -
2.2.3. Installing ezTCP	11 -
2.2.4. Configuring ezTCP	12 -
2.2.5. Connecting via the Serial Port of the PC	13 -
2.2.6. Communication Test	13 -
3. CONFIGURING WIRELESS LAN, IP ADDRESS, AND ENVIRONMENT VALUES	14 -
3.1. Configuring Wireless LAN	14 -
3.1.1. Items to Check for the Wireless LAN	14 -
3.1.2. Setting Wireless LAN Items of the ezTCP	16 -

3.2.	Setting the IP Address and Environment Values	17
3.2.1.	ezConfig	18
3.2.2.	AT Command	22
3.2.3.	Setting the IP Address Using the ARP	22
3.2.4.	Setting IP Address-related Items through the DHCP Server	23
4.	OPERATION MODE	24
4.1.	Overview and How To Enter Each Mode	24
4.1.1.	Overview	24
4.1.2.	How To Enter Each Mode	24
4.2.	Serial Configuration Mode and ISP Mode	26
4.2.1.	Serial Configuration Mode	26
4.2.2.	ISP Mode	26
4.3.	Normal Communication Mode	26
5.	NORMAL COMMUNICATION MODES	28
5.1.	T2S (TCP to Serial)	28
5.2.	ATC (AT Command)	30
5.3.	COD(Connect On Demand)	32
5.4.	U2S (UDP to Serial)	34
6.	ATC MODE	36
6.1.	Overview	36
6.1.1.	AT command format	36
6.2.	Basic AT Commands	36
6.3.	Extended AT commands	37
6.4.	Online State and Online Command State	37
6.4.1.	How to switch to online command state from online state	38
6.4.2.	How to switch to online command state	38

6.5.	Example of Configuration by AT Commands	38 -
6.6.	Example of Connection	39 -
6.6.1.	Example of Active Connection	39 -
6.6.2.	Example of Passive Connection.....	39 -
6.7.	Example of Termination.....	39 -
6.7.1.	Example of Active Termination	39 -
6.7.2.	Example of Passive Termination.....	40 -
 7. TECHNICAL SUPPORT, WARRANTY, AND NOTES ON OPERATION		41 -
7.1.	Technical Support.....	41 -
7.1.1.	Warranty	41 -
7.1.2.	Refund.....	41 -
7.1.3.	Free Repair Services.....	41 -
7.1.4.	Charged Repair Services	41 -
7.1.5.	Notes on Operation.....	42 -

1. OVERVIEW

1.1. Overview

With the development of Internet technologies, demands for data communication through the Internet keep increasing. However, to have data communication through the Internet, users must use TCP/IP protocol which is the basic communication protocol of the Internet. In other words, to connect a device to the Internet, the user must implement TCP/IP protocol. To implement TCP/IP protocol, the user must implement TCP/IP protocol by themselves, port open TCP/IP, or use an OS. However, these methods are quite burdensome in terms of time, cost, and technology.

As a family of serial to TCP/IP protocol converters, ezTCP series manufactured by Sollae Systems provide TCP/IP communication functions (Internet communication functions) "only through serial port connection." The ezTCP series perform TCP/IP protocol processing on data received from the serial port, and send the processed data to the Internet. Similarly, the ezTCP series perform TCP/IP protocol processing on data received from the Internet and sends the processed data to the serial port.

EZL-300W Lite(it is pronounced as "lait"), which is one of ezTCP products, provides TCP/IP communication through IEEE802.11b (wireless LAN). In other words, like other ezTCP products, EZL-300W Lite TCP/IP-processes data received from the serial port and sends the processed data to the wireless LAN network. And EZL-300W Lite(hereafter ezTCP) TCP/IP-processes data received from the wireless LAN network and sends the processed data to the serial port.

ezTCP supports the infrastructure network through the Access Point (AP) and also provides an "ad-hoc" network function supporting peer to peer communication without any AP.

As ezTCP provides DHCP as well as TCP/IP/UDP, ezTCP can be applied to cable networks.

1.2. Components

- EZL-300W Lite Main Body
- 3.3V PCMCIA Wireless LAN Card(16bit PC Card) Supporting IEEE802.11b (option)
- 5V SMPS Adapter (option)
- RS-232 Cable (option)

1.3. Specifications

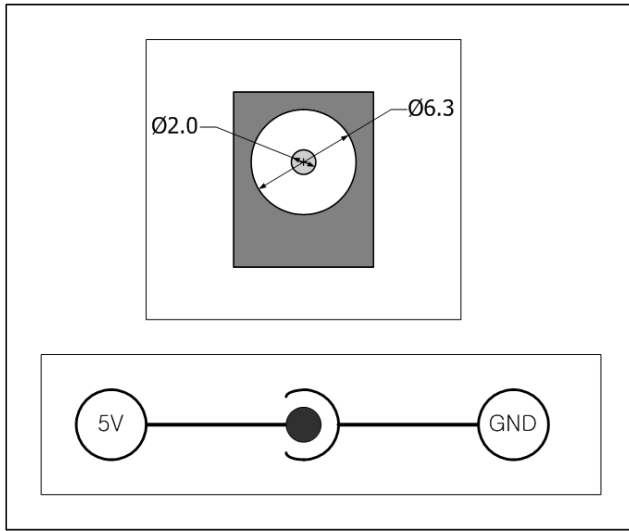
Power	Input Voltage	5V
	Current Consumption	320mA typical (It depends on wireless LAN card)
Size	137mm x 78mm x 28mm	
Weight	305 g	
Interface	Serial	9pin Dsub male
	Network	16bit PC card
Serial Port	RS232 level(1200bps ~ 115200bps) RTS/CTS hardware flow-control	
Network	IEEE802.11b wireless LAN(infrastructure/ad-hoc)	
Protocols	TCP, UDP, IP, ICMP, ARP, DHCP, WEP	
Communication Modes	T2S	TCP, server mode
	COD	TCP, client mode
	ATC	TCP, server/client modes (AT command emulation)
	U2S	UDP
Operating Temperature	0 ~ 70	
Utilities	ezConfig	Configuration utility via LAN
	ezSerialConfig	Configuration utility via serial
	ezterm	Socket communication utility for test
	wflash	Firmware download utility

☞ Download utilities and firmware from <http://www.eztcp.com>.

1.4. Interface Specifications

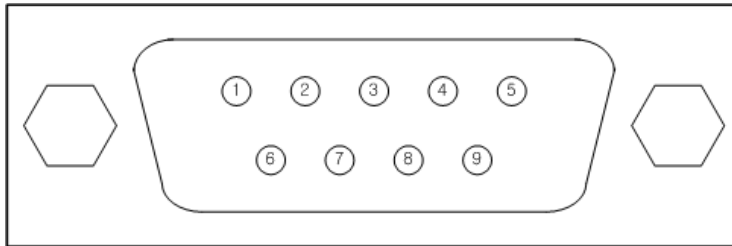
1.4.1. Power

The user must use the DC5V SMPS power adapter provided by Sollae Systems. Specifications of a power jack are as shown below.



1.4.2. RS232 Dsub Connector

A serial port connector is interfaced through the 9pin Dsub male connector. For specifications of each pin, see the following:



No.	Name	Description	Signal Level	Direction	Remark
1	NC				
2	RXD	Receive Data	RS232	Input	mandatory
3	TXD	Transmit Data	RS232	Output	mandatory
4	DTR	Data Terminal Ready	RS232	Output	Always ON
5	GND	Ground	Ground	-	mandatory
6	DSR	Data Set Ready	RS232	Input	Not used
7	RTS	Request To Send	RS232	Output	optional
8	CTS	Clear To Send	RS232	Input	optional
9	NC				

1.4.3. Status LED

In ezTCP, there are total 5 status LEDs.

Each status LED functions as follows:

Name	Description	Color	LED Status	Description
PWR	Power	Red	Turned on	When the power is on
STS	Status	Yellow	Blinking once per second	When IP address is assigned, but no TCP connection established
			Blinking 4 times every 2 seconds	When no IP address was assigned(DHCP)
			Turned on	During a TCP connection
LINK	Wireless LAN Link	Green	Turned on	the wireless LAN LINK is established
RXD	Wireless LAN Reception	Yellow	Turned on	When a packet is received from the wireless LAN
TXD	Wireless LAN Transmission	Green	Turned on	When a packet is transmitted to the wireless LAN

1.4.4. Wireless LAN Interface

ezTCP requires PCMCIA wireless LAN card, which should be 3.3V 16 bits PC card and compatible to PRISM 2.5 or PRISM 3.0 of Intersil.

2. Installation and Test Operation

2.1. Installation

Install ezTCP as follows:

Categories	Sub-categories	Context	See
1. Checking Communication Environment	Items to check	Wireless LAN environment	3.1.1.
		IP address environment	
		Serial port setup values	
		Application program to use	
2. Configuring the Wireless LAN	Setup tool	ezSerialConfig	3.1.2.
	Setup Items	Wireless LAN Types (Infrastructure and ad-hoc)	3.1.1.
		Service Set Identification (SSID)	
		Channel	
	Whether to use WEP (If used, set key value)		
3. Connecting to the Network	Confirming Procedure	Checking link LED lightning status	
4. Setting Environment Variables	Setup Procedure	Set by ezConfig (a configuration utility through a network)	3.2.1.
		Using AT command in ATC mode	6.
		Using ARP (To set only the IP address temporarily)	3.2.3.
	Setup Items	IP address-related items	3.2.
		Serial port-related items	3.2.
		Communication mode (To be decided according to the application program)	4.3.
5. Field Application			

2.1.1. Checking Communication Environment

Before installing ezTCP, the user must check conditions of the network to install the ezTCP as follows:

- Wireless LAN network types (infrastructure/ad-hoc)
- the SSID and the channel of the wireless LAN
- Whether to use WEP and WEP setup values (the number of bits and key values)
- Authentication Protocol for wireless LAN access
- IP address environment (Local IP, subnet mask, gateway, etc.)
- Serial port items of the device to connect (baudrate, databit, parity, and stop bit)
- Protocol of the application program to use (TCP/UDP, server/client, etc.)

☞ *For more information about the wireless LAN, see “3.1 Configuring the Wireless LAN.”*

☞ *For more information about protocol of the application program to use, see “4.3 Normal Communication Mode.”*

It is not applicable to a wireless LAN which use authentication, because ezTCP doesn't support authentication protocols for the wireless LAN

2.1.2. Configuring the Wireless LAN

Before using the ezTCP, the user must set wireless LAN-related items. Wireless LAN-related items can be set via ezSerialConfig in a serial configuration mode. Supply power without the PCMCIA card insertion to enter into the serial configuration mode. In the serial configuration mode, the user can set not only wireless LAN-related items but also all setup values of the ezTCP.

☞ *For more information about the serial configuration mode, see “4. Operation Modes.”*

☞ *For more information about wireless LAN-related items in serial configuration mode, see “3.1 Configuring the Wireless LAN.”*

2.1.3. Connecting to the Network

Insert the PCMCIA card while power is not supplied. Then, connect the device with the

ezTCP using RS232 cable that is compliant with the specification, and supply power. After power is supplied, the link LED should be turned on. When the link LED is on, it means that a link has been established between the AP and wireless LAN device or between the wireless LAN devices to enable communication between them.

2.1.4. Setting Environment Variables

Once a connection to the network has been established, set environment variables - variables relating to the IP address, the serial port, and communication mode - using ezConfig which is an environment variable configuration program.

☞ *For more information about environment variables, see “3.2 Setting IP Address and Environment Values.”*

2.2. Test Operation

Perform test operation according to the following sequence. A method to perform the test operation will now be described, assuming that the network is configured as the infrastructure, the AP and the PC are directly connected via a crossed LAN cable, and the IP address of the PC is 10.1.0.2.

2.2.1. Changing the IP Address of the PC

Change the IP address of the PC as follows:

IP Address	10.1.0.2
Subnet Mask	255.0.0.0
Gateway IP Address	0.0.0.0

2.2.2. Installing the AP

Connect the AP with the PC through the crossed LAN cable.(When connecting through a hub, use a one-to-one cable for this connection.) After installing the cable, supply power to the AP as provided by the AP vendor. After supplying power, check the link LED indicating a connection between the AP and PC to make sure this connection is successfully made.

2.2.3. Installing ezTCP

Connect the PC with ezTCP using RS232 cable provided by Sollae Systems, and insert the PCMCIA card. When power is supplied using the power adapter designed for

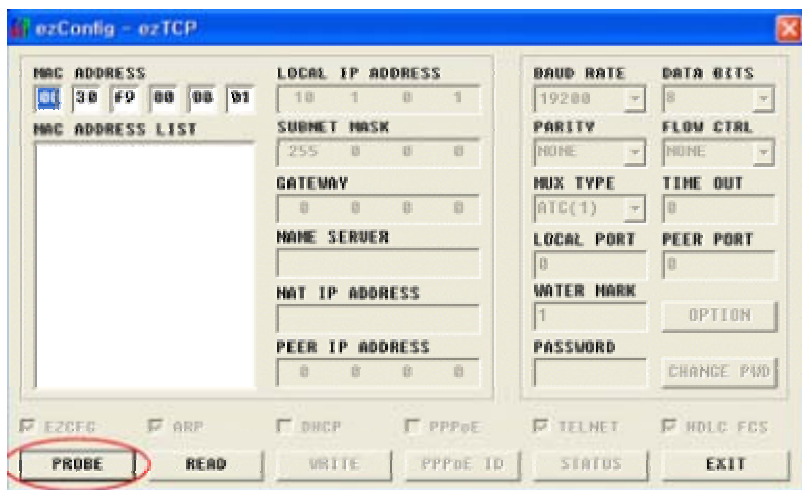
ezTCP by Sollae Systems, ezTCP attempts making a connection with the AP that replies first. Once ezTCP is connected with the AP, the link LED is turned on and then a communication through the wireless LAN is possible.

It is possible that ezTCP connect other AP because SSID is not set. In this case, you should set SSID to ezTCP via ezSerialConfig

2.2.4. Configuring ezTCP

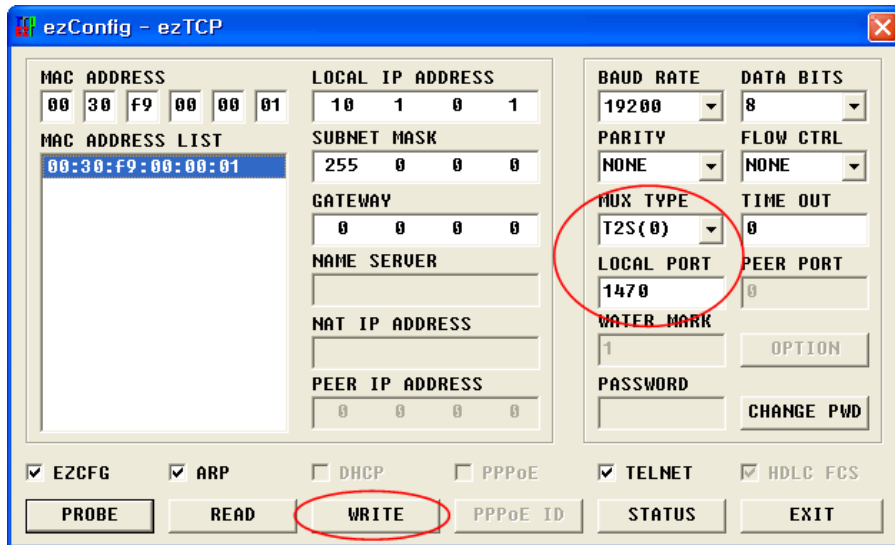
Use ezConfig (the ezTCP configuration program) and change the configuration of ezTCP as follows:

Run ezConfig, and click on [PROBE] button on the ezConfig window. Then, the ezConfig will search for ezTCPs.



Once the ezTCP(s) is(are) found, the MAC address (hardware address) indicated at the bottom of the ezTCP case will be displayed in the [MAC ADDRESS LIST] window.

Select the corresponding MAC address, and change the [MUX TYPE] into [T2S(0)]. Then, enter 1470 in the [LOCAL PORT] field and click on [WRITE] button to save the setup values.



2.2.5. Connecting via the Serial Port of the PC

Connect between the serial port of the PC and the serial port of the ezTCP using the serial communication cable provided by Sollae Systems. Then, run a serial communication program such as Hyper Terminal. Select 19200bps for the serial port, 8 bits for the data bit, 1 bit for the stop bit, and no parity.

2.2.6. Communication Test

Once the preparation for serial communication has been completed, enter the following in the command prompt of Windows, and establish a TCP connection using Telnet program.

```
"telnet 10.1.0.1 1470"
```

When TCP connection is successfully established, "STS" LED of the ezTCP is turned on. If "123" data is transmitted to Telnet window after checking that "STS" LED is on, then "123" is displayed on Hyper Terminal. If "ABC" data is transmitted to Hyper Terminal window, then "ABC" data is displayed on Telnet window. It means the communication test is successful.

3. Configuring Wireless LAN, IP Address, and Environment Values

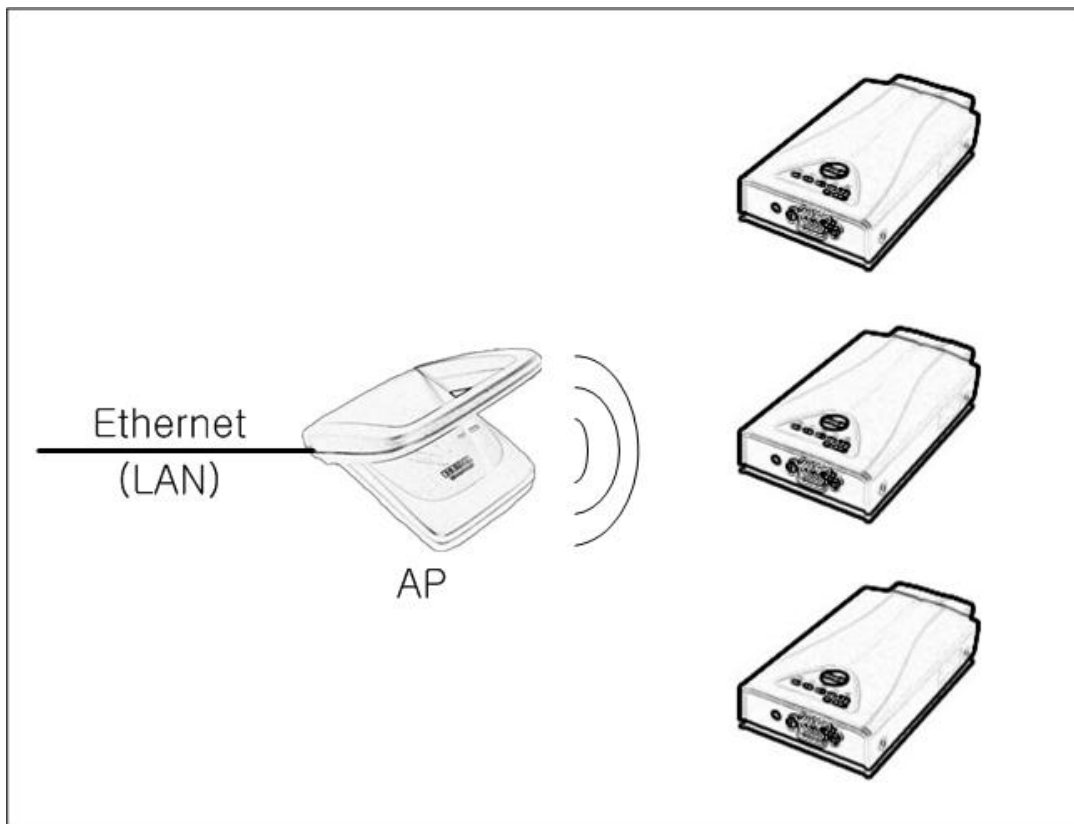
3.1. Configuring Wireless LAN

When configuring the wireless LAN, the user must check the network type and security issues of the network currently being used or to be installed in the future.

3.1.1. Items to Check for the Wireless LAN

- Network Type (infrastructure/ad-hoc)

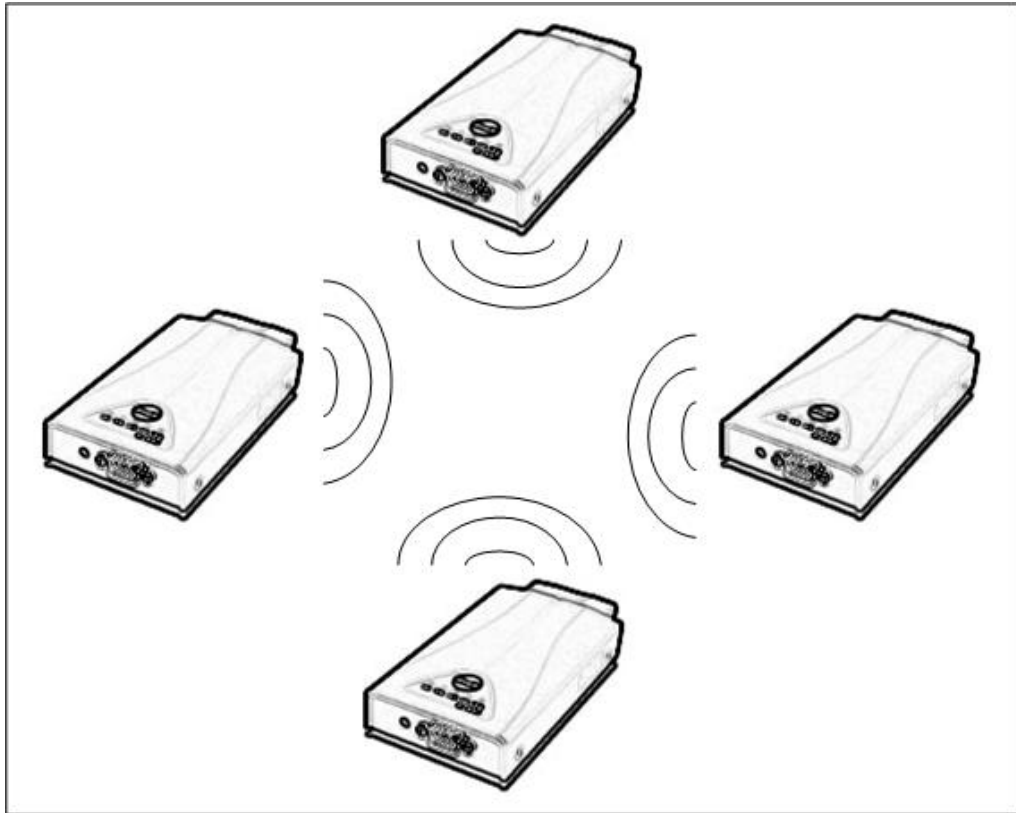
The infrastructure is a network connection mode that allows communication between wireless LAN devices or between the wireless LAN and the wired LAN (Ethernet) through the Access Point (AP). When a network type is set to infrastructure, communication with wired LAN via AP is possible, which allows both wired and wireless Internet communications.



<Infrastructure>

The ad-hoc network is designed to communicate between wireless LANs without any

AP. Since communication is established without any AP, the user cannot access an external network or the Internet. This is also called a peer-to-peer mode.



<Ad-hoc>

- Service Set Identifier (SSID)

When configuring a network, the user can configure different networks using different APs. In this case, the SSID is used to differentiate one network from another. In other words, when configuring an infrastructure network, the user can make communication with the AP which he/she wants to communicate with by setting the SSID of the desired AP in the ezTCP. (See 3.1.2.) For information about SSID of the AP, AP manual or AP configuration program can be referred to. If the user did not set the SSID, the ezTCP will be connected with the AP that is first found when power is supplied.

The maximum length of the SSID is 32 bytes, and the user can use ASCII code to set the SSID.

- Channel

The channel is communication path in the network that it belongs to. Channel values are set as the same value with the AP.

- Wired Equivalent Privacy (WEP)

This is about security of the wireless LAN. The wireless LAN provides similar security to that of the wired LAN using the WEP. To use the WEP, the user must set the key value. According to the key value, data is encoded in 64 bits or 128 bits for communication. If the user did not set the WEP, security-related problems may occur.

- Authentication Protocols

To avoid illegal access to wireless LAN, there are various authentication protocols. But ezTCP doesn't support any authentication protocol. If a wireless LAN network uses any authentication protocol, you should not install ezTCP to that network.

3.1.2. Setting Wireless LAN Items of the ezTCP

There are two ways to configure wireless LAN-related items - Windows utility "ezSerialConfig"..

The following table describes each configuration field.

Field	Description	Factory-set
TARGET SSID	SSID of the Network to Participate	Not set.
CREATE SSID	SSID of the Network to Newly Create When Configuring an Ad-hoc Network	Not set.
CC TYPE	0) IBSS: Ad-hoc Network	1
	1) BSS: Infrastructure Network	
	2) WDS: Reserved (Reserved)	
	3) Pseudo IBSS: Reserved (Reserved)	
CHANNEL	Channel number	0
WEP TYPE	0) WEP is not used.	0
	1) 64 bit WEP key	
	2) 128 bit WEP key	
KEY ID	Number of the Key to be Used	0
Authentication	For setting EAP-MD5	OFF

- Setting via ezSerialConfig utility

Operate ezTCP in serial configuration mode to utilize ezSerialConfig. Follow the sequence as described below.

1. Run ezSerialConfig program in the PC.
2. With no LAN card inserted, connect ezTCP and the PC by a serial cable and apply power.
3. Select the COM port of the PC to which the cable is connected and press the [READ] button.
4. Configure the environmental parameters of ezSerialConfig. At this time, you should configure wireless LAN-related items. (The other items may be configured with ezConfig program after the wireless LAN is inserted into ezTCP.)
5. Push the [WRITE] button in the ezSerialConfig window.

3.2. Setting the IP Address and Environment Values

To establish TCP/IP communication, the user must set fields relating to the IP address as well as fields relating to the serial port (baud-rate, data bit length, parity bit, flow control, etc.) in the ezTCP.

The user can set the fields relating to IP address and the serial port through the ezConfig (a configuration utility through the network) or AT command in ATC mode. To set the fields, the user also may temporarily set the IP address by the ARP method using the MAC address (hardware address).

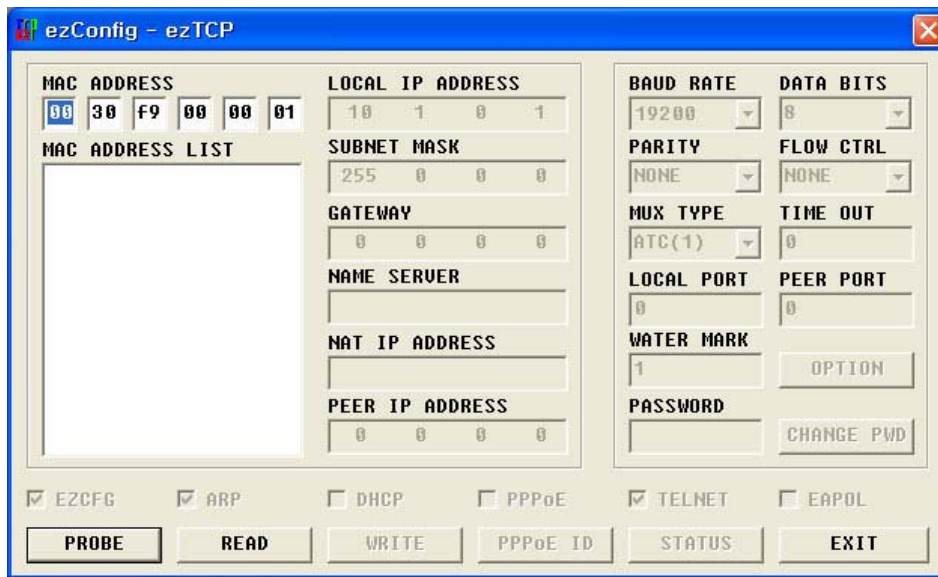
	Items	Description
IP Address Fields	LOCAL IP ADDRESS	ezTCP IP Address
	SUBNET MASK	Subnet Mask
	GATEWAY	Gateway
	LOCAL PORT	Listening Port Number in Server Mode
	PEER IP ADDRESS	peer IP Address in Client Mode
	PEER PORT	Port Number in Client Mode

Serial Port	BAUD RATE	Baud Rate (bps)
	DATA BITS	Data Bit Length
	PARITY	Parity
	FLOW CTRL	Flow Control
Communication Mode	MUX TYPE	Communication Mode
Connection/ Connection Termination Event	WATER MARK	Minimum Number of Bytes to Attempt Connection/Transmission
	TIMEOUT	Connection Time Out
Using Configuration Method	EZCFG	ezConfig Function enable/disable
	ARP	ARP function enable/disable
Floating IP	DHCP	DHCP(Dynamic Host Configuration Protocol)
Telnet Password	PASSWORD	Password when Performing Remote Login through Telnet

3.2.1. ezConfig

The basic environment information of ezTCP can be configured through DHCP, ARP, and ezConfig. This section takes an example of using ezConfig, which is a configuration program via wired/wireless LAN. For the other configuration modes, see the following sections. ezConfig can run on Microsoft Windows platform but may not operate on some of the existing operating systems. The screen below shows the initial screen of ezConfig:

ezConfig broadcast UDP data to communicate ezTCPs, so it can be used in local network(If there is a gateway between ezTCP and PC, then ezConfig doesn't work.)



Each button on ezConfig functions as follows:

PROBE This button is used to search for all of the network-attached ezTCPs. The search results will be displayed on the MAC ADDRESS LIST box and you can select an item using a mouse or cursor as required. The value displayed on the box indicates the MAC ADDRESS of each ezTCP. The selected setup value of ezTCP will be displayed on the right side.

READ You can see only the ezTCP configuration values if you press this button after entering the 6-digit hexadecimal number printed on the ezTCP main body in the MAC ADDRESS box. It is useful when there are too many ezTCPs attached to the network to search for one from the LIST box.

WRITE This button is used to save the changed value in ezTCP after modifying the configuration. Make sure not to press this button during operating ezTCP since ezTCP will automatically be reset right after its environment setup value is saved. Otherwise, it may cause malfunction.

EXIT This button is used to close ezConfig. You can also close it by pressing ESC key on the keyboard.

CHANGE PWD ezTCP provides User Authentication function to prevent an unwanted person from modifying the configuration. The authentication process is performed through the password string verification. When entering or changing the password strings, you can use this button. Changing the ezTCP configuration details if a password has been entered requires the proper password to be entered in the PASSWORD field.

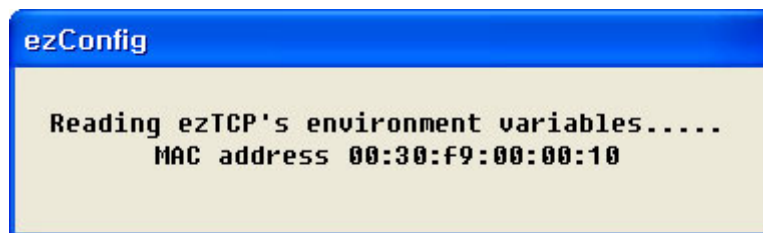
STATUS This button is used to read a dynamic variable value during operating ezTCP. Pressing this button will display a new window, where the time-elapsd after the power

is on, the current IP address, and the data throughput of the serial port are indicated. Double-clicking each item on the MAC ADDRESS LIST will carry out the same function.

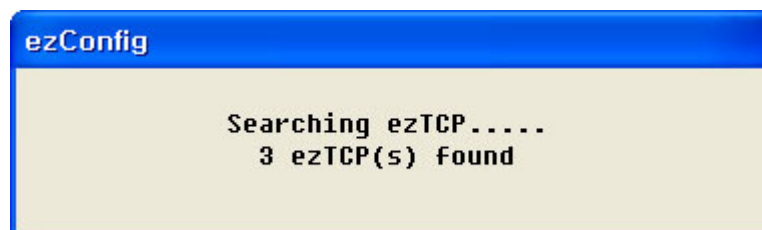
ezConfig can be used to change the IP address related items, the serial port setup value, the serial port operation mode, and how to setup ezTCP. This section describes these functions briefly. For more information, see the following sections.

The following example shows how to read and change ezTCP's basic functions. Try changing ezTCP setup value according to the following sequence:

- When the ezTCP power is turned on and the LAN cable is connected correctly, pressing [PROBE] or [READ] button will display the following window:

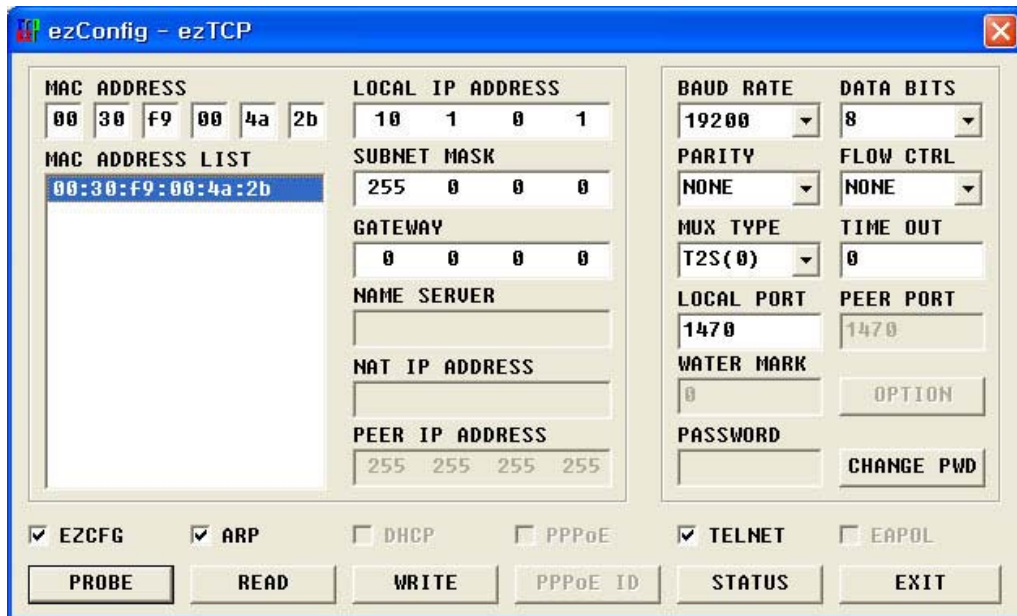


- If a network-attached ezTCP is detected, the following message will be displayed. If a message pops up indicating that there is no response from ezTCP, check that the power is turned on and the cable is connected correctly, then try pressing [PROBE] or [READ] button.



- If more than one ezTCP are detected, ezTCP's MAC ADDRESS will be displayed in the [MAC ADDRESS LIST] box on ezConfig. Check if the MAC ADDRESS displayed in the [MAC ADDRESS LIST] window corresponds to that printed on ezTCP main body. The following screen shows this process:

- Select T2S (0) in the [MUX TYPE] field on ezConfig. Setup [LOCAL IP ADDRESS], [LOCAL PORT], and the serial port settings according to a test environment as required. When the setup is completed, pressing [WRITE] will save the changed values in ezTCP. If an error message pops up during storing the configuration, check that ezTCP is connected correctly, and then try again.



- In Windows' MS-DOS prompt window, check the IP address is set correctly by giving the PING command. If the ezTCP IP address is set correctly, the PING results will be displayed as follows. If a message, "Request timed out", is displayed, check that IP address setup value again.

```
C:\>ping a.b.c.d
```

```
Pinging a.b.c.d with 32 bytes of data:
```

```
Reply from a.b.c.d: bytes=32 time=1ms TTL=64
```

```
Reply from a.b.c.d: bytes=32 time=1ms TTL=64
```

```
Reply from a.b.c.d: bytes=32 time=1ms TTL=64
```

```
Reply from a.b.c.d: bytes=32 time=1ms TTL=64
```

3.2.2. AT Command

In ATC mode, the user can set environment variables through the serial port using AT command.

☞ See "6. ATC MODE".

3.2.3. Setting the IP Address Using the ARP

On Windows and UNIX(Linux) platform, the command 'arp' enables a user to change the contents of arp cache table from the host computer. After changing the contents of the arp cache table, attempting a Telnet connection or a ping test will change the ezTCP's IP address. IP address changed by the arp command will not be stored in EEPROM. Therefore, the user should change the IP-related items by giving "env if" command through telnet access. ezTCP allows the user to change the IP address only one time after the power is turned on. For that reason, the user should reset ezTCP when changing the IP address.

The example listed below shows how to change the arp cache table on Windows' MS-DOS prompt window and Linux. If ezTCP's Ethernet address is 00:30:f9:00:00:01 and the IP address to use is a.b.c.d., the user can change the IP address as follows:

- Windows

```
C:\>arp -s a.b.c.d 00-30-f9-00-00-01           Change the table.
C:\>arp -a                                   Check changes.
Interface: xxx.xxx.xxx.xxx on Interface xxxxxxxx
Internet Address   Physical Address   Type
a.b.c.d           00-30-f9-00-00-01 static
C:\>telnet a.b.c.d                             Access the ezTCP.
C:\>
```

Linux

```
rtos:~>arp -s a.b.c.d 00:30:f9:00:00:01          Change the table.
rtos:~>arp                                       Check changes.
Address      HWtype  HWaddress  FLags Mask Iface
a.b.c.d      ether   00:30:f9:00:00:01  CM    eth0
rtos:~>ping a.b.c.d                               pinging to ezTCP
```

3.2.4. Setting IP Address-related Items through the DHCP Server

Under environment with a network operating a DHCP server, DHCP protocol allows the user to automatically set the IP address, subnet mask, gateway, and name server of ezTCP. Using DHCP automatic setup function requires the user to check [DHCP] item on ezConfig. Note that the user may have to check [ARP] item according to the type of DHCP servers.

When setting the IP address through the DHCP server, the IP address is dynamically allocated. Therefore, the user cannot use T2S and U2S mode.

4. OPERATION MODE

4.1. Overview and How To Enter Each Mode

4.1.1. Overview

There are 3 modes (normal mode, serial configuration mode, ISP mode) in ezTCP. ezTCP does normal operation in the normal mode, and it configures environmental variables(especially wireless LAN related item), and it perform firmware upgrading in ISP mode.

The operation modes of ezTCP are normal communication mode, serial configuration mode and ISP mode. Major differences among the modes are as follows.

4.1.2. How To Enter Each Mode

- Normal mode

ezTCP operates in the normal mode if a PCMCIA card is inserted. ezTCP attempt to connect a link to wireless LAN at first. And LINK LED is on after connection.

- Serial configuration mode

ezTCP operates in the serial configuration mode if it is turned on without LAN card insertion. In serial configuration mode, all environmental variables can be set including wireless LAN related items.

- ISP mode

After connecting PC and ezTCP via serial cable, run serial terminal program(i.e. Tera Term Pro) which can transmit binary file with 115200bps baudrate. As soon as it is turned on, if you input <CR>(0x0d), you can see a “000” message. If you should input “flash”, then you can enter ISP mode.

Following is the message when ezTCP enters to ISP mode.

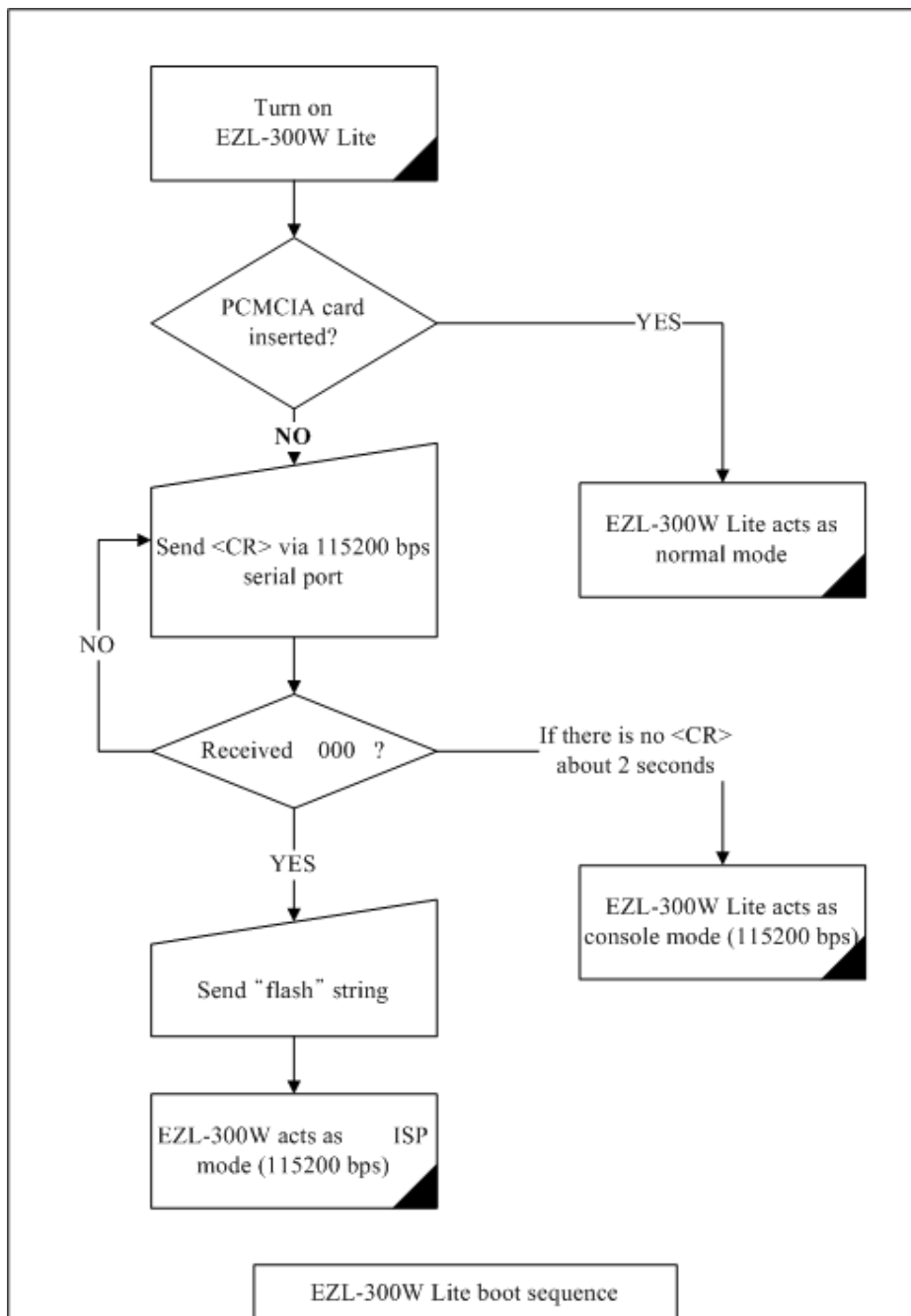
```
000
100 AVR/64 BOOTLDR 10 SOLLAE SYSTEMS 203 vender: 0x1F, device code: 0x35
```

Following is an explanation of each mode.

Op. Mode	Description	Related Utility	LAN Card
Normal Comm Mode	Normal operation (TCP/IP protocol conversion)	ezConfig	Inserted

Serial Configuration Mode	Sets up parameters including wireless LAN items through the serial port.	ezSerialConfig	Not inserted
ISP Mode	Upgrades the ezTCP firmware through the serial port.	wflash	Not inserted

The Following describes the booting sequence of ezTCP.



4.2. Serial Configuration Mode and ISP Mode

4.2.1. Serial Configuration Mode

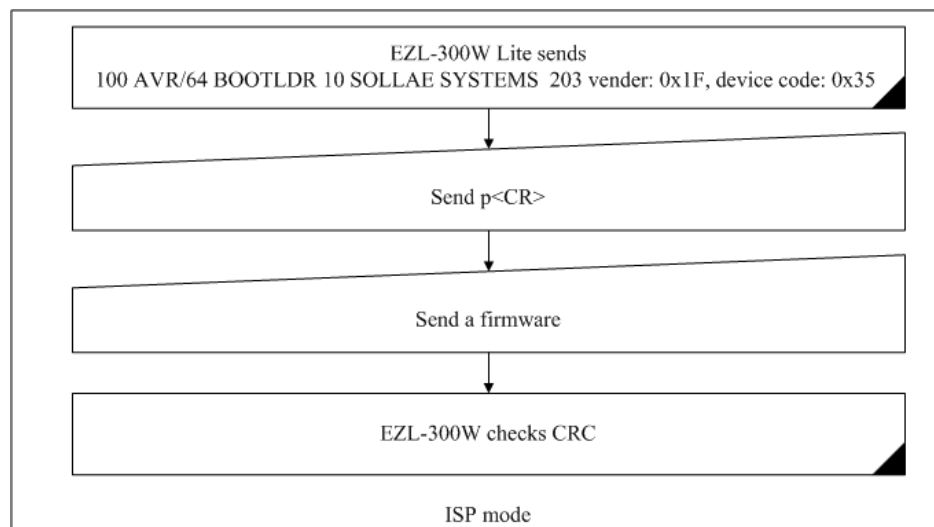
You can set all items including wireless related items and IP related items via ezSerialConfig in the serial Configuration mode.

4.2.2. ISP Mode

In ISP mode, you can download a firmware which is supplied from Sollae Systems.

Buadrate	115200 bps
parity	No parity
Data bit	8 bits
Stop bit	1 bit

The following describes the firmware download method.



If you use wflash which is supplied by Sollae Systems, you can download firmware more easily.

4.3. Normal Communication Mode

This is the normal communication mode of ezTCP as designed for its purpose.

When you apply power to an ezTCP product with the LAN card inserted, It will initiates normal communication mode.

In normal communication mode are available four communication modes, T2S, ATC, COD and U2S, as shown in the table below.

Comm. Mode	Protocol	Connection Type	S/W Modification	Parameter change through the serial port	Topology
T2S	TCP	Passive	Not needed	No	1:1
ATC	TCP	Active/Passive	Needed	Possible	1:1
COD	TCP	Active	Not needed	No	1:1
U2S	UDP	No connection	Not needed	No	N:M

TCP is a protocol that requires a connection process. Connection always takes place a one-to-one basis. A host waiting for connection (passive connection) is called a server, and one attempting to make a connection (active connection) is called a client.

On the other hand, UDP communicates by the block without the process of connection, and thus allows multiple hosts to communicate simultaneously.

☞ *For detailed operation modes, refer to the next chapter.*

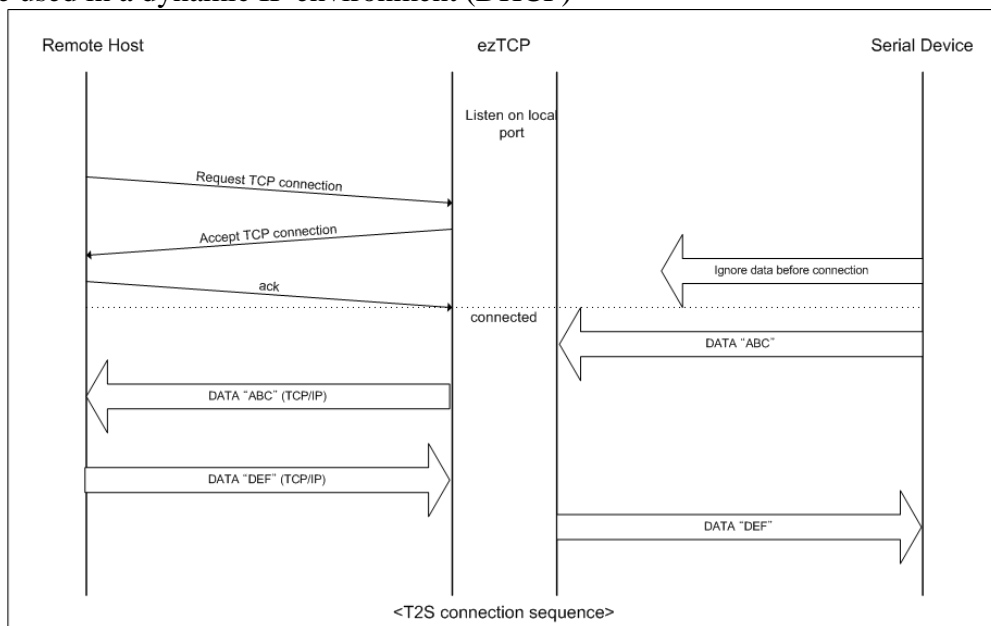
5. NORMAL COMMUNICATION MODES

5.1. T2S (TCP to Serial)

In T2S mode, the ezTCP functions as a server.

When a TCP connection comes from a remote host to the predefined local port, the ezTCP accepts a TCP connection. When the ezTCP accepts TCP connection, then the TCP connection is established. After connection is established, TCP/IP processing is performed on the data coming to the serial port, which is then transmitted to the remote host. And the TCP/IP data coming from the remote host is TCP/IP-processed and transmitted to the serial port to establish data communication. (Data coming to the serial port before TCP connection is established will be ignored.)

In T2S mode, the ezTCP functions as a server. Therefore, T2S mode cannot be used in a dynamic IP environment (DHCP)



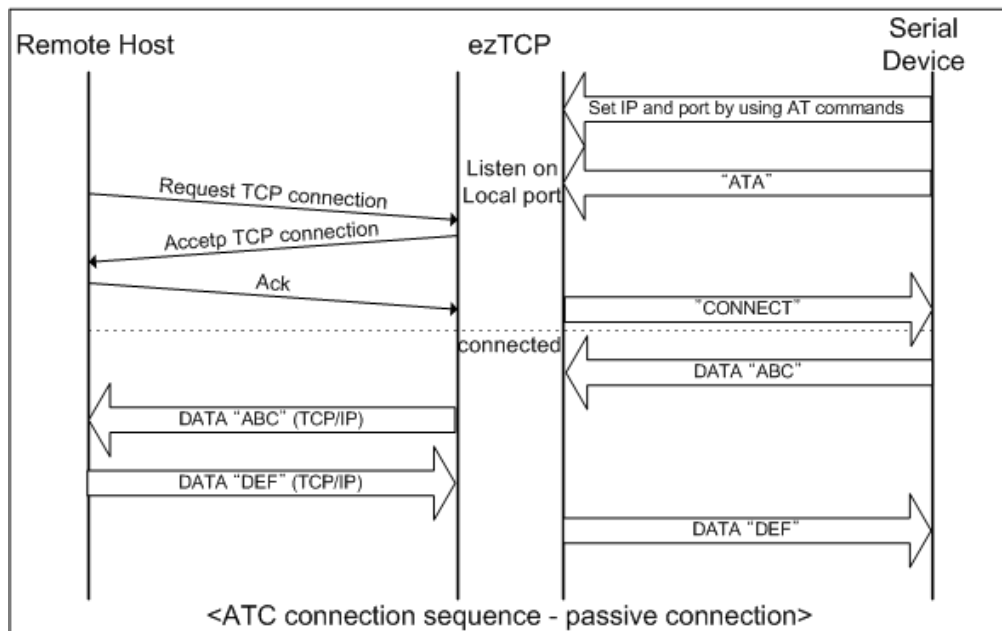
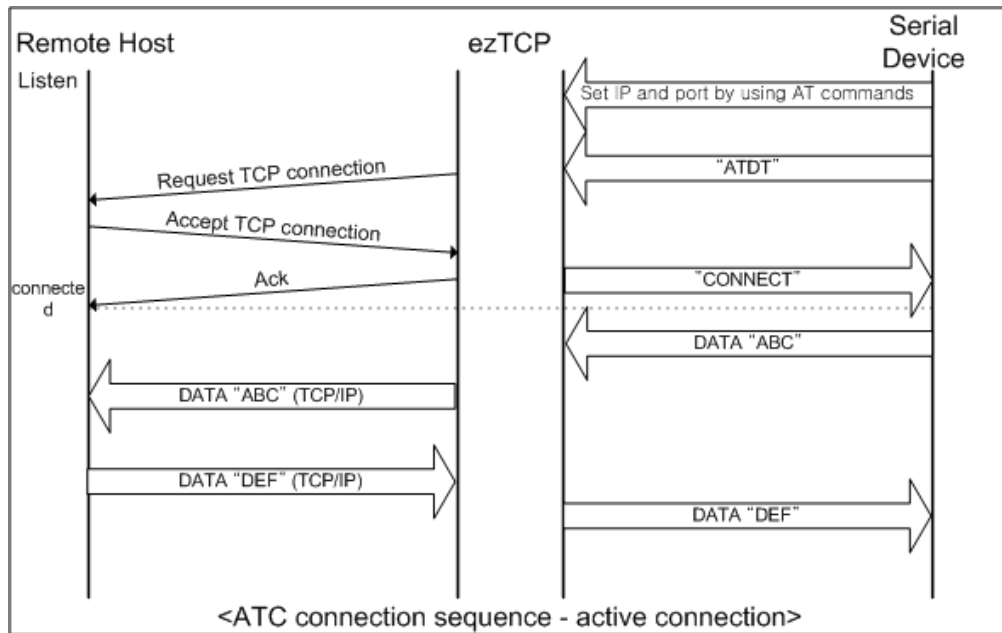
Set the following for T2S mode:

	Field	Description
IP Addresses	LOCAL IP ADDRESS	Local IP address of ezTCP
	SUBNET MASK	Subnet mask
	GATEWAY	Gateway IP address
	LOCAL PORT	Local port number to listen
	PEER IP ADDRESS	-
	PEER PORT	-
Serial Port	BAUD RATE	Speed of serial port(bps)
	DATA BITS	Data length
	PARITY	Parity
	FLOW CTRL	Flow control
Mode	MUX TYPE	T2S(0)
Connection Disconnection	WATER MARK	-
	TIMEOUT	Connection is terminated if there's no transmission data during [TIMEOUT]
Configuration Method	EZCFG	ezConfig function enable/disable
	ARP	ARP function enable/disable
Dynamic IP	DHCP	-

5.2. ATC (AT Command)

In ATC mode, the user can control the ezTCP in a similar way to controlling the modem using AT command. In ATC mode, only a TCP connection is possible and both the server and the client can be configured.

In ATC mode, the AT command allows the user to set environment variables including the IP address and control TCP connection and disconnection.



Set the following for ATC mode:

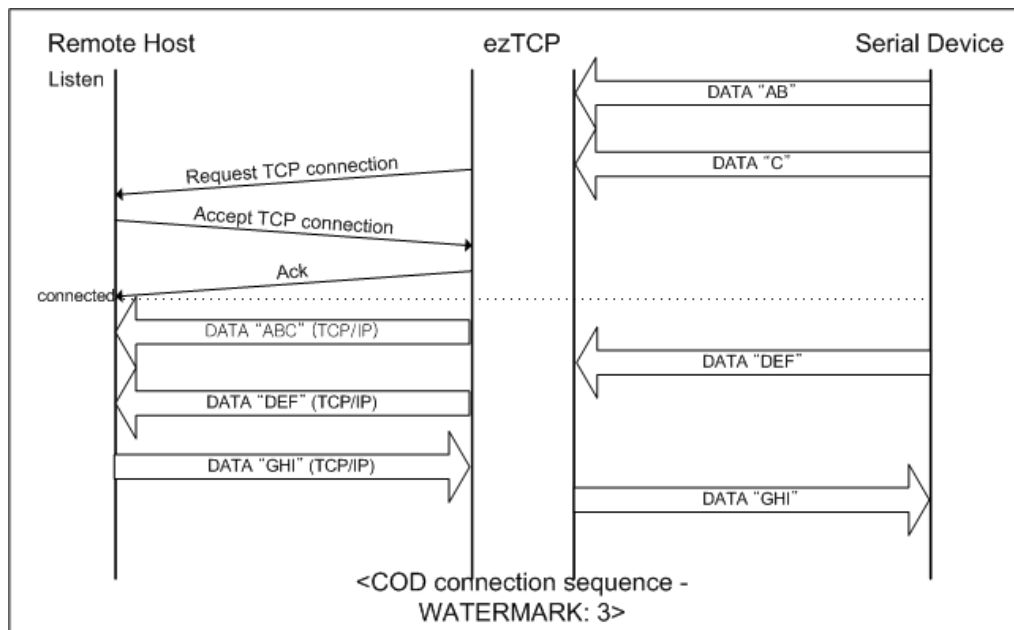
	Field	Description
IP Addresses	LOCAL IP ADDRESS	Local IP address of ezTCP
	SUBNET MASK	Subnet mask
	GATEWAY	Gateway IP address
	LOCAL PORT	Local port number to listen
	PEER IP ADDRESS	IP address of host to connect
	PEER PORT	Port number of host to connect
Serial Port	BAUD RATE	Speed of serial port(bps)
	DATA BITS	Data length
	PARITY	Parity
	FLOW CTRL	Flow control
Mode	MUX TYPE	ATC(1)
Connection Disconnection	WATER MARK	-
	TIMEOUT	Connection is terminated if there's no transmission data during [TIMEOUT]
Configuration Method	EZCFG	ezConfig function enable/disable
	ARP	ARP function enable/disable
Dynamic IP	DHCP	DHCP function enable/disable

☞ Confer next chapter to get more information about AT commands.

5.3. COD(Connect On Demand)

In COD mode, the ezTCP functions as a client.

When data of the pre-specified size [WATER MARK] comes to the serial port, the ezTCP attempts a TCP connection to the TCP port [PEER PORT] of the preset host IP [PEER IP ADDRESS]. If the remote host accepts the TCP connection, TCP connection will be established. Data coming to the serial port after connection establishment is TCP/IP-processed and transmitted to the remote host. And, data coming from the remote host is TCP/IP-processed and transmitted to the serial port for data communication.



Set the following for COD mode:

	Field	Description
IP Addresses	LOCAL IP ADDRESS	Local IP address of ezTCP
	SUBNET MASK	Subnet mask
	GATEWAY	Gateway IP address
	LOCAL PORT	-
	PEER IP ADDRESS	IP address of host to connect
	PEER PORT	Port number of host to connect
Serial Port	BAUD RATE	Speed of serial port(bps)
	DATA BITS	Data length
	PARITY	Parity
	FLOW CTRL	Flow control
Mode	MUX TYPE	COD(2)
Connection Disconnection	WATER MARK	the number of bytes. ezTCP attempts a connection when it receive a mount of [WATER MARK] from its serial port.
	TIMEOUT	Connection is terminated if there's no transmission data during [TIMEOUT]
Configuration Method	EZCFG	ezConfig function enable/disable
	ARP	ARP function enable/disable
Dynamic IP	DHCP	DHCP function enable/disable

5.4. U2S (UDP to Serial)

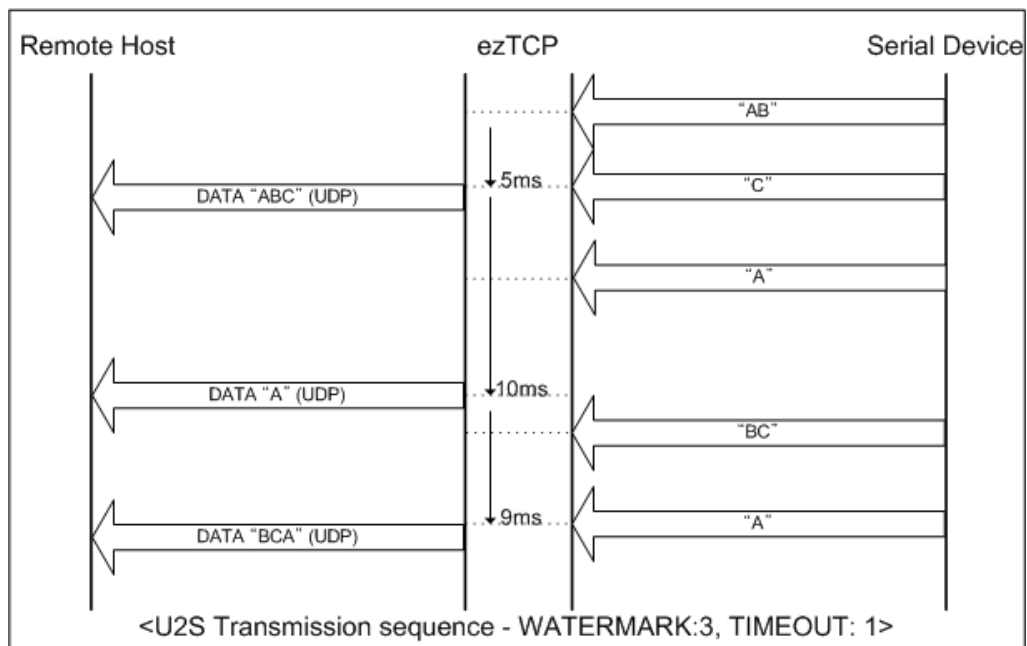
U2S mode allows for UDP communication.

In UDP mode, data are transmitted in blocks, which requires dividing data coming to the serial port into blocks before transmitting data. A procedure for dividing data into blocks is as follows:

If data of pre-specified bytes [WATER MARK] comes to the serial port of the ezTCP or if a specified period of time [TIMEOUT] elapses after first data reception, all data received for the same period is recognized as one block which is then transmitted to the UDP. The [TIMEOUT] unit is 10ms. If [TIMEOUT] is set to 2, the time period is between 20ms and 30ms.

Since UDP communication does not require a connection procedure, the user can establish N-to-M communication via multicast and broadcast.

In U2S mode, ezTCP doesn't support DHCP.



U2S

	Field	Description
IP Addresses	LOCAL IP ADDRESS	Local IP address of ezTCP
	SUBNET MASK	Subnet mask
	GATEWAY	Gateway IP address
	LOCAL PORT	Port number to receive UDP data
	PEER IP ADDRESS	IP address of host to send UDP data
	PEER PORT	Port number of host to send UDP data
Serial Port	BAUD RATE	Speed of serial port(bps)
	DATA BITS	Data length
	PARITY	Parity
	FLOW CTRL	Flow control
Mode	MUX TYPE	U2S(3)
Transmission Unit	WATER MARK	Byte size starting to send
	TIMEOUT	Receiving interval to send as a block (unit: 10msec)
Configuration Method	EZCFG	ezConfig function enable/disable
	ARP	ARP function enable/disable
Dynamic IP	DHCP	-

6. ATC MODE

6.1. Overview

In ATC mode, it is possible to set up and control ezTCP by use of AT commands, which are modem commands. For instance, you can set the remote IP to connect by AT+PRIP command and make connection by ATD command. Thus, communication with multiple hosts in turn is possible. Also you can make passive connection by ATA command.

6.1.1. AT command format

AT commands start with “AT” and end with <CR>.

The format of AT commands is as follows.

AT	Command	<CR>(0x0d)
----	---------	------------

The response code from ezTCP to an AT command is as follows.

Response Message	<CR>(0x0d)	<LF>(0x0a)
------------------	------------	------------

Response Message

ATV1 (Initial setup)	ATV0	Description
OK	0	Command OK
ERROR	4	Command error
CONNECT	1	TCP connection established
NO CARRIER	3	TCP connection terminated
SET VALUE	SET VALUE	When a set value is queried (Ex: AT+PRIP?)

6.2. Basic AT Commands

Command	Function	Description
A	passive connection	Listening connection (connection from host to ezTCP)
D	active connection	Starting to connect to host

E	echo	Enable/disable echo of AT command (ATE1-enable, ATE0-disable)
H	off-hook	Terminating Connection
I	Inquiry	Showing ezTCP's Information
O	Online	Toggle to on-line state
V	response code	The type of response code (numeric-V0, verbose-V1)
Z	reset	Initializing ezTCP

6.3. Extended AT commands

Command	Function	Description
+PLIP	local IP address	
+PSM	subnet mask	
+PGIP	default router	
+PLP	listening TCP port	
+PTO	timeout	
+PRIP	Remote machine IP address	
+PRP	Remote machine TCP port	
+PWP	Write configuration	Saving configuration values to EEPROM
+PRC	Enable/disable ezConfig	ON: 1, OFF: 0
+PARP	Enable/disable ARP	ON: 1, OFF: 0
+PDC	DHCP	ON: 1, OFF: 0

6.4. Online State and Online Command State

If connection has not been established in ATC mode, the system is in online command mode and permits the use of AT commands.

Once connection has been established, the system is in online state and does not permit the use of AT commands. In order to use AT commands while TCP connection is established, it is necessary to switch to online command state and then use AT commands.

Online command state	While TCP connection is not established, AT commands can be used.
Online state	While TCP connection is established, all data are converted to TCP/IP.

6.4.1. How to switch to online command state from online state

In order to switch from online state to online command state, it is necessary to send a '+++' message in proper format within specified time. The '+++' message will be sent to the peer host.

The time interval between the last data transmission and inputting the first '+'	500ms or up
The time between '+'s	0~500ms
The interval which is no data transmission after the last '+'	500ms or up

6.4.2. How to switch to online command state

In case the system has been switched from online state to online command state while TCP connection is established, it can be switched back to online state by ATO command.

6.5. Example of Configuration by AT Commands

	Transmission Data		Description
	AT+PLIP=192.168.1.200<CR>		Set local IP address
	OK<CR><LF>		Command OK
	AT+PGIP=192.168.1.254<CR>		Set gateway IP address
	OK<CR><LF>		Command OK
	AT+PSM=255.255.255.0<CR>		Set subnet mask
	OK<CR><LF>		Command OK
	AT+PLP=1470<CR>		Set local port
	OK<CR><LF>		Command OK
	AT+PTO=10<CR>		Set TIME OUT
	OK<CR><LF>		Command OK
	AT+PWP<CR>		Save configuration data to the EEPROM
	OK<CR><LF>		Command OK

	NO CARRIER<CR><LF>		After system resets
--	--------------------	--	---------------------

6.6. Example of Connection

6.6.1. Example of Active Connection

	Transmission Data		Description
	AT+PRIP=192.168.1.201<CR>		Set remote IP address to connect
	OK<CR><LF>		Command OK
	AT+PRP=1470<CR>		Set remote port number to connect
	OK<CR><LF>		Command OK
	ATDT<CR>		Connect to the remote host
Attempting a connection			
	CONNECT<CR><LF>		Connection established
TCP/IP data transmission			

6.6.2. Example of Passive Connection

	AT+PLP=1470<CR>		Set local port
	OK<CR><LF>		Command OK
	ATA<CR>		Listen connection
Listening connection from remote host			
Connection from remote host			
	CONNECT<CR><LF>		Connection established
TCP/IP data transmission			

6.7. Example of Termination

6.7.1. Example of Active Termination

The following is the sequence to terminate connection initiated by ezTCP.

	Data		Description
Data exchange (TCP connection established)			

	[guard time]+++[guard time]		switching to online command state from online state.
	<CR><LF>OK<CR><LF>		switching to online command state completed
	ATH		TCP termination command
	OK<CR><LF>		TCP connection terminated

6.7.2. Example of Passive Termination

In case an external host attempts to terminate a connection;

	Data		Description
Data exchange (TCP connection established)			
In case an external host attempts to terminate connection			
	NO CARRIER<CR><LF>		TCP connection terminated

7. Technical Support, Warranty, and Notes on Operation

7.1. Technical Support

If you have any question regarding operation of the product, visit Customer Support FAQ corner and the message board on Sollae Systems' web site or send us an email at the following address:

Website Address for Customer Support:

<http://www.sollae.co.kr/Support/index.html>

Email Address:

7.1.1. Warranty

7.1.2. Refund

Upon the customer's request to refund the product within two weeks after purchase, Sollae Systems will refund the product.

7.1.3. Free Repair Services

For product failures occurring within one year after purchase, Sollae Systems provides free repair services or exchange the product. However, if the product failure is due to user's fault, repair service fees will be charged or the product will be replaced at user's expense.

7.1.4. Charged Repair Services

For product failures occurring after the warranty period (one year) or resulting from user's fault, repair service fees will be charged and the product will be replaced at user's expense.

7.1.5. Notes on Operation

- Sollae Systems is not responsible for product failures occurring due to user's alternation of the product.
- Specifications of the product are subject to change without prior notice for performance improvement.
- Sollae Systems does not guarantee successful operation of the product if the product was used under conditions deviating from the product specifications.
- Reverse engineering of firmware and applications provided by Sollae Systems is prohibited.
- Use of firmware and applications provided by Sollae Systems for purposes other than those for which they were designed is prohibited.
- Do not use the product in an extremely cold or hot place or in a place where vibration is severe.
- Do not use the product in an environment in which humidity is high or a lot of oil exists.
- Do not use the product where there is caustic or combustible gas.
- Sollae Systems does not guarantee normal operation of the product under the conditions a lot of noise exists.
- Do not use the product for a purpose that requires exceptional quality and reliability relating to user's injuries or accidents - aerospace, aviation, health care, nuclear power, transportation, and safety purposes.
- Sollae Systems is not responsible for any accident or damage occurring while using the product.