

EZL-400 Summary Data Sheet

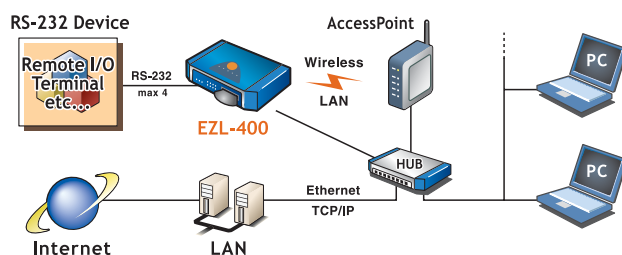


4 port Serial Device Server
 IEEE802.11b wireless LAN interface
 10Base - T interface
 4 serial port (RS232 level)
 infrastructure & ad-hoc support
 firmware downloadable via TFTP
 DHCP, PPPoE, EAP-MD5 support
 AT command emulation support
 management via telnet

Specifications

Power	Input Voltage	3.3V \pm 0.3V
	Current	MAX800 mA
Dimension	190mm x 125mm x 26mm	
Weight	about 600g	
Interface	Serial	9pin Dsub male
	Network	10Base-T(RJ45), 16 bit PC card (PCMCIA)
Serial	4 x RS232 level(1200bps ~ 115200bps)	
Network	10Base-T, IEEE802.11b wireless LAN (infrastructure/ad-hoc)	
Protocols	TCP, UDP, IP, ICMP, ARP, TELNET, DHCP, PPPoE, EAP-MD5, WEP	
Communication Modes	T2S	TCP, Server mode
	COD	TCP, Client mode
	ATC	TCP, Server/Client (AT emulation)
	U2S	UDP
Utilities	ezcfgmp	configuration utility
	hotflash	firmware download utility
	ezterm	socket communication test utility

System Diagram



Applications

remote monitoring systems
 remote metering systems
 remote fire fighting equipment systems
 air circulator remote control
 ATM systems
 health check systems
 security systems
 traffic display systems
 etc.



Sollae Systems Co., Ltd.
<http://www.ezTCP.com>

Technical support: support@eztcp.com
 Sales: sales@eztcp.com