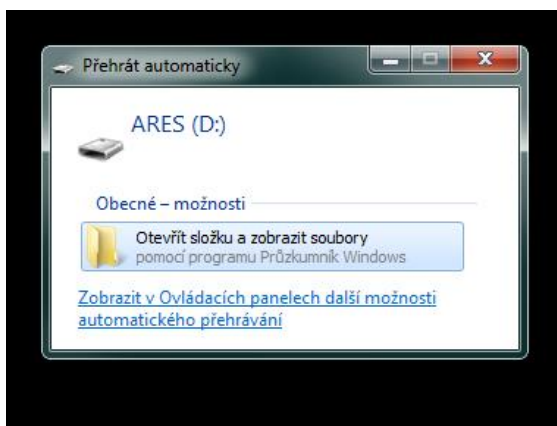


Connecting HWg- Ares 12/14 to SensDesk portal

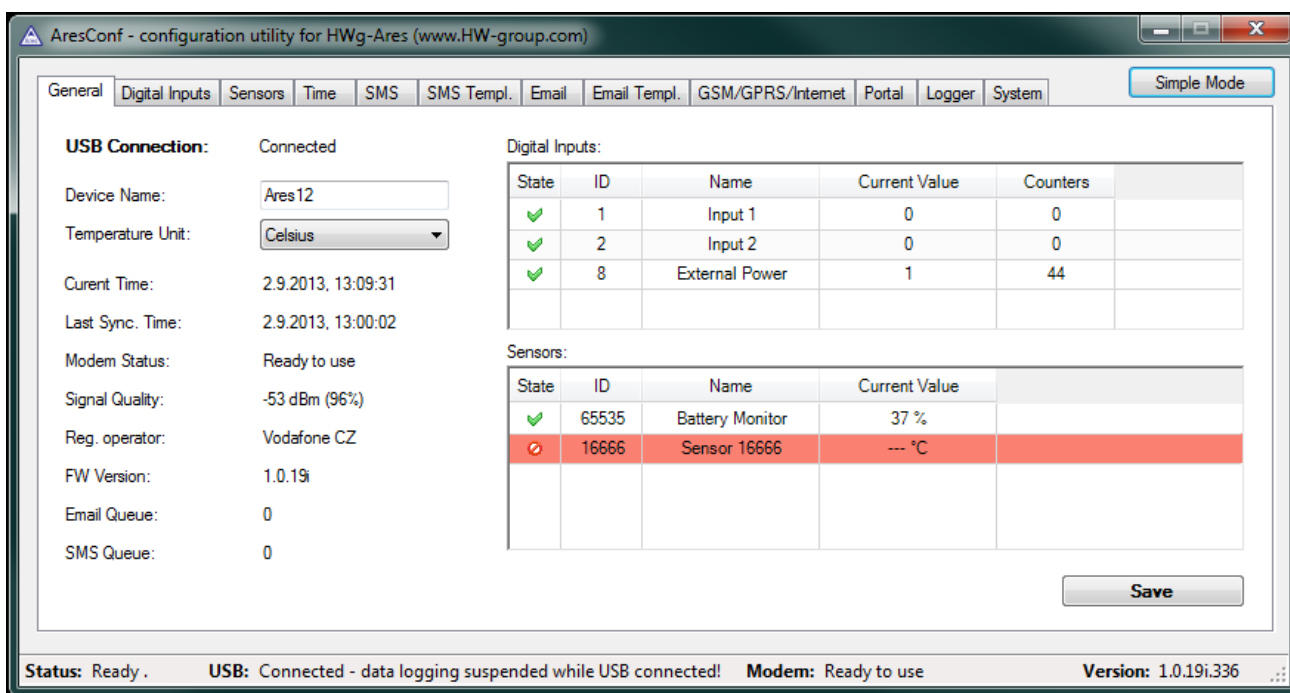
This document shows the steps to connect HWg-STE and STE plus to SensDesk portal and the portal configuration.

Connecting to the Portal

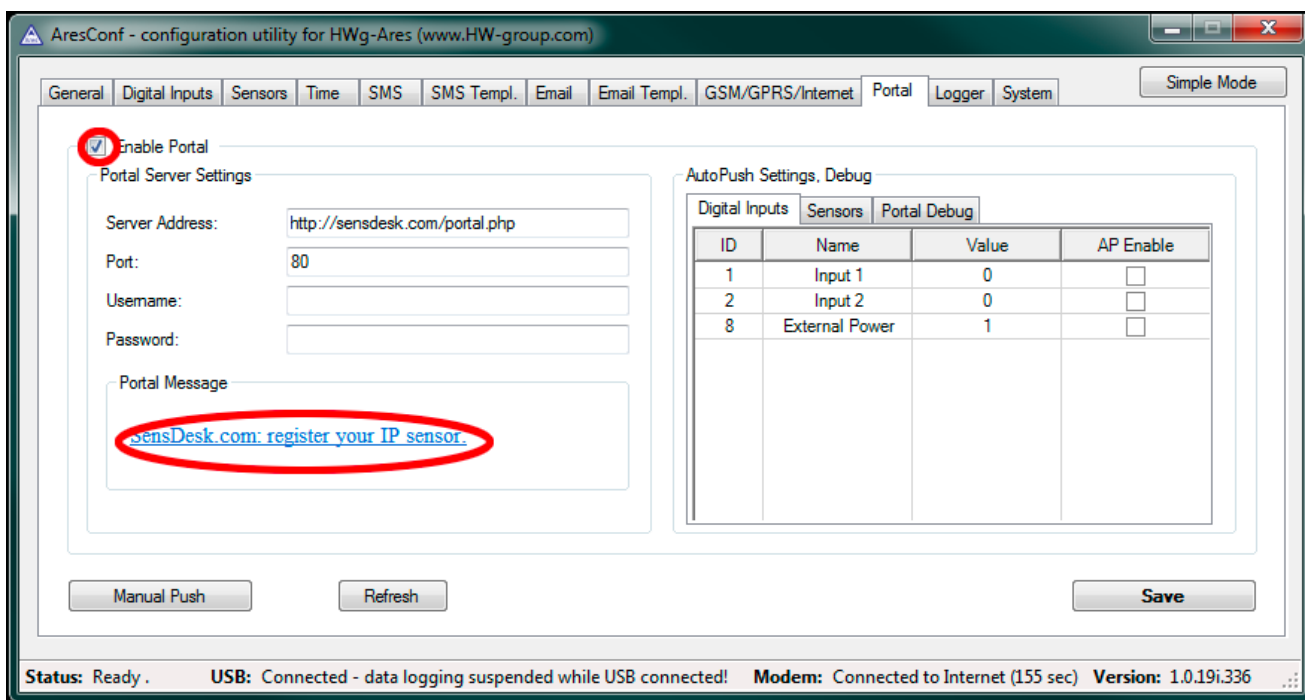
- 1) First power on the Ares and connect it with your computer via provided USB cable. Ares will appear on your PC as an external drive. In its main directory, open ARESCONF.exe.



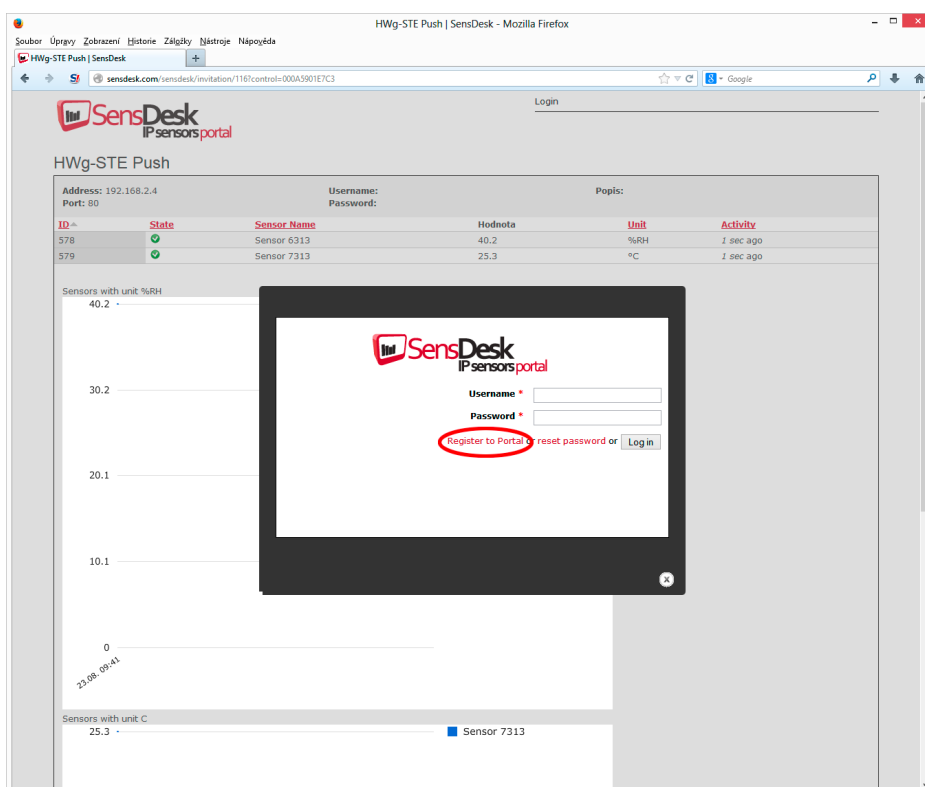
- 2) In AresConf, first switch to Advanced mode by clicking the button in the top right corner of the window, then go to *Portal* tab.



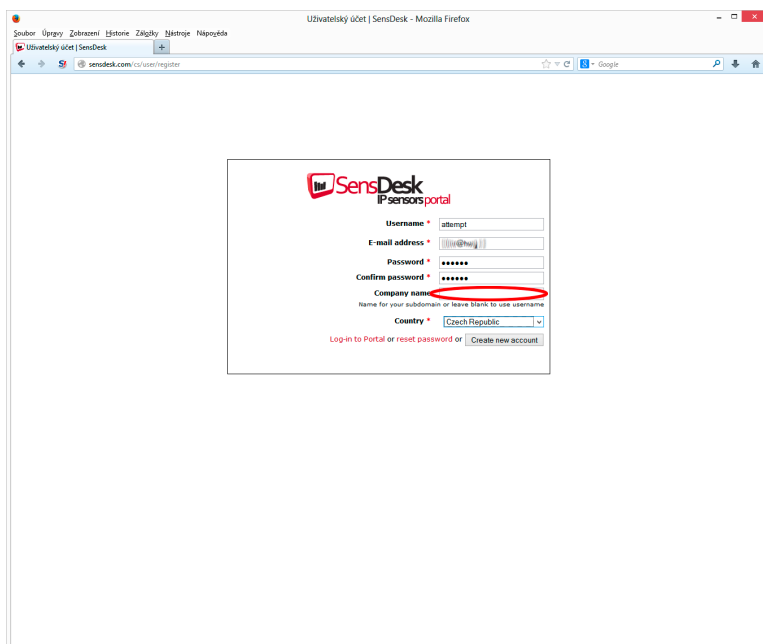
- 3) Tick the *Enable Portal* option and save the changes using the *Save* button in the bottom right corner of the window. Then click the *Manual Push* button in order to activate the portal function.



Instead of *Portal disabled*, a link *SensDesk.com: register your IP sensor* should appear in the *Portal Message* field. Click this link in order to get to the SensDesk portal.



- 4) In case you already have a user account, please enter your login details and the device will be automatically assigned to your account. If you do not have a SensDesk account yet, click the *Register to Portal* link and a registration form will be shown.



Uživatelský účet | SensDesk - Mozilla Firefox

sensdesk.com/cs/user/register

SensDesk
IP sensors portal

Username * attempt

E-mail address * [email]

Password * *****

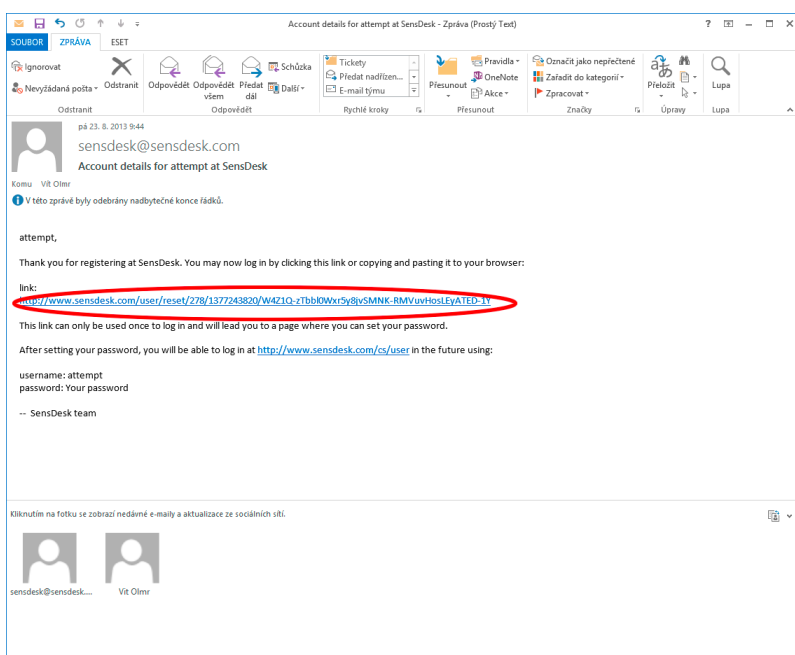
Confirm password * *****

Company name * [red circle]

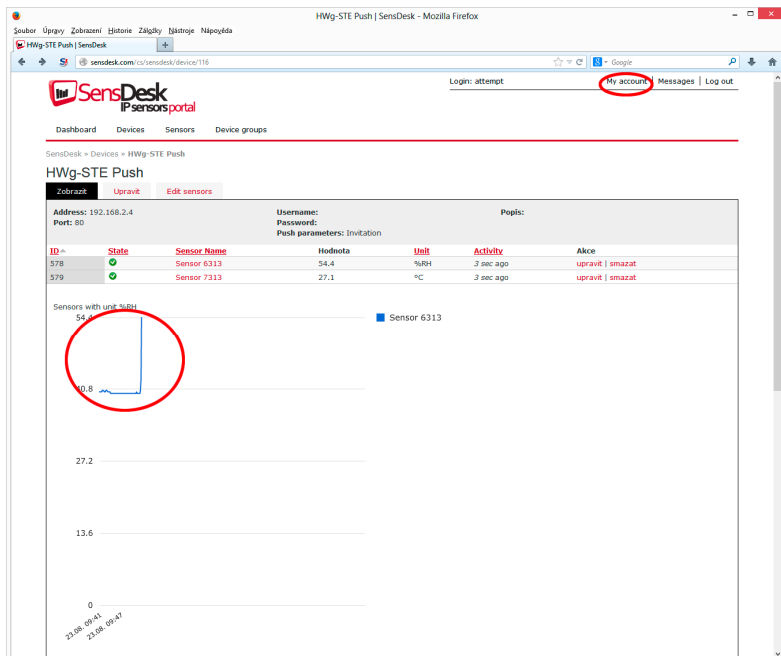
Country * Czech Republic

Login to Portal or reset password or Create new account

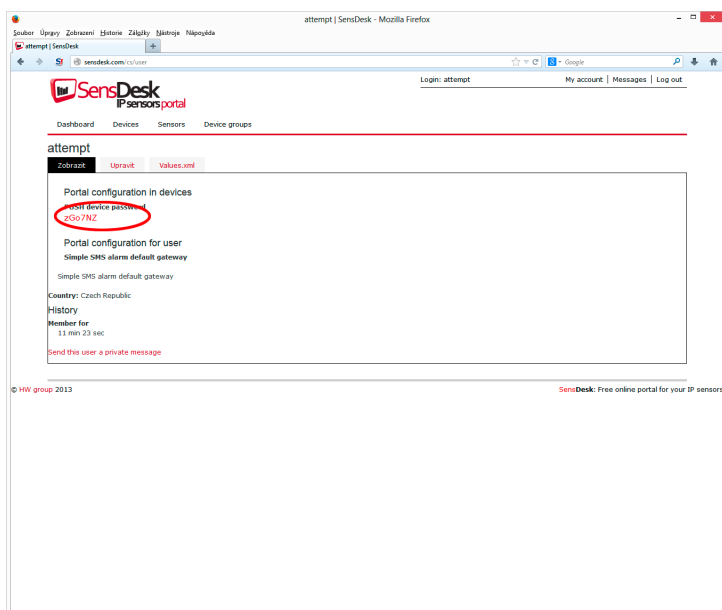
- 5) Enter the login details for your new account and a correct e-mail address. This e-mail address has to be unique for the server (cannot be already registered by another user). *Company name* allows you to create your own 3rd level domain (usually *company.sensdesk.com*). A user name will be used if the *Company name* field is left empty. After clicking the *Create new account* button, a user account will be created and at the same time a confirmation email is sent to the entered e-mail address. This e-mail contains a confirmation link, which has to be used in order to activate the account.



- 6) By activating the account, you will be redirected to the *Invitation page* of the device. At this moment, the data-sending period is set to 10 seconds to show the sensors functionality. This page is active only for approximately 15 minutes after the activation, then the logging period changes to 15 minutes.



- 7) If you check your user account configuration (*My Account* link), you will find your *Push Device Password*. This password, together with your login name, identifies the device in communication with your account and in communication of mobile applications with SensDesk. The password cannot be changed and for a security reason it is different to the login password.



- 8) PUSH Device Password can be used in devices to skip the logging procedure during assigning the device to your portal account, or in mobile applications:

The image shows two parts: a web browser window on the left and a mobile application interface on the right.

Web Browser Window: The browser displays the 'HWg-STE Push: Ethernet thermometer' configuration page. The 'Portal' section includes a 'Portal Message' and a 'Portal config' table. The 'Portal config' table has columns for Name, Value, and Description. The 'Push Period' is set to 30 [s]. The 'Log Period' is set to 10 [s]. The 'Server Address' is http://sensdesk.com/portal.php. The 'IP Port' is 80. The 'Username' is 'attent' (circled in red) and the 'Password' is '*****'. The 'Sensor(s) autopush config' table has columns for ID, Name, Current Value, and AutoPush Delta. The 'AutoPush Delta' for sensor 7313 is set to 2.0 (circled in red). There are 'Save' and 'Manual Push' buttons at the bottom.

Mobile Application Interface: The app shows a header 'HWg-Sensors' with a status bar at the top (85% battery, 10:42). Below the header are tabs for 'ALL' and 'ALARMS', and a dropdown menu for 'Group: Doma'. A table displays sensor data for 'Vitek Doma' with columns for sensor name, value, and unit. The table is filtered to show 'ALARMS'. The data rows are:

Group	Sensor Name	Value	Unit
Vitek Doma	Cos Fi 1	84	
Vitek Doma	Cos Fi 2	38	
Vitek Doma	Cos Fi 3	58	
Vitek Doma	Current	0.7 A	
Vitek Doma	Current1	0.405 A	
Vitek Doma	Current2	0.441 A	
Vitek Doma	Current3	2.594 A	
Vitek Doma	Energy	4448.557 kWh	
Vitek Doma	Energy	23820.9 kWh	
Vitek Doma	Energy	4136442 Wh	
Vitek Doma	Input 1	0	
Vitek Doma	Input 2	0	
Vitek Doma	Input 3	0	
Vitek Doma	Input 4	0	
Vitek Doma	Input 5	0	
Vitek Doma	Input 6	0	
Vitek Doma	Input 7	0	
Vitek Doma	Input 8	0	

 At the bottom of the app interface is a 'Reload Sensors Page' button.

Portal function periodically sends the data to a remote server and the sending period is set by this server.

AutoPush is a function allowing unusual measured data sending, beside the periodical logging, in case that the value change is higher than the AutoPush delta parameter.