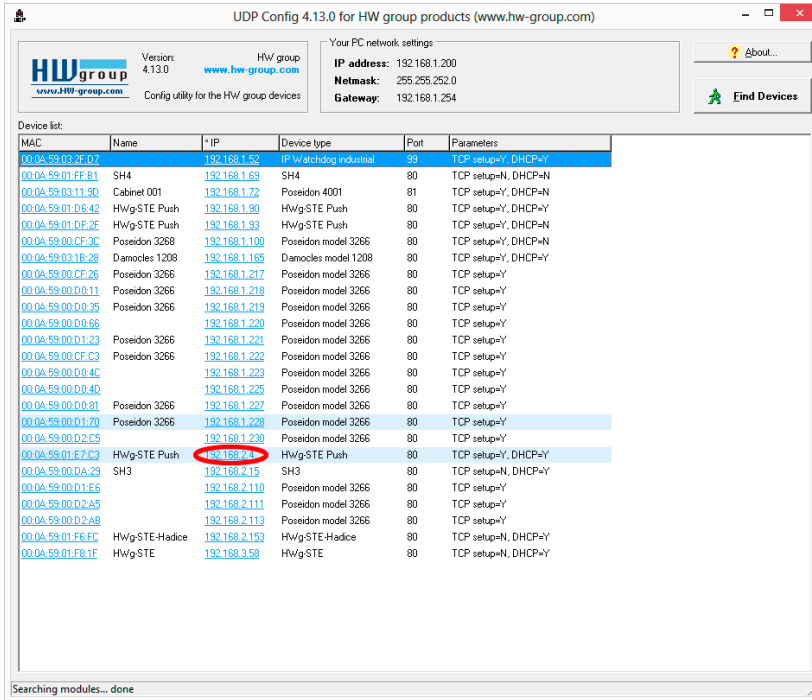


# Connecting HWg-STE Push and STE plus to Sensdesk portal

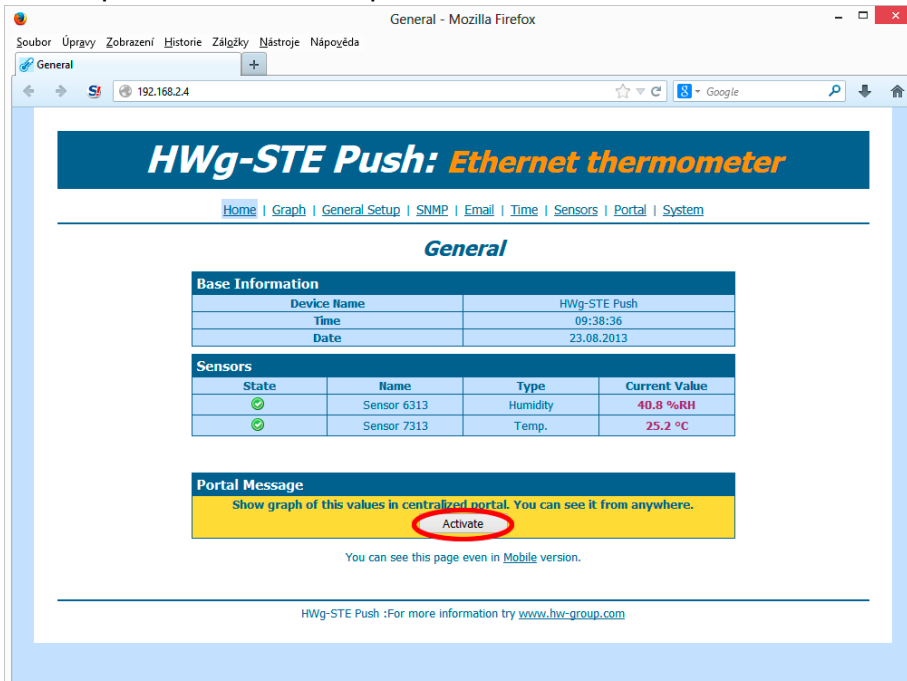
*This document shows the steps to connect HWg-STE and STE plus to Sensdesk portal and the portal configuration.*

# Connectin to the Portal

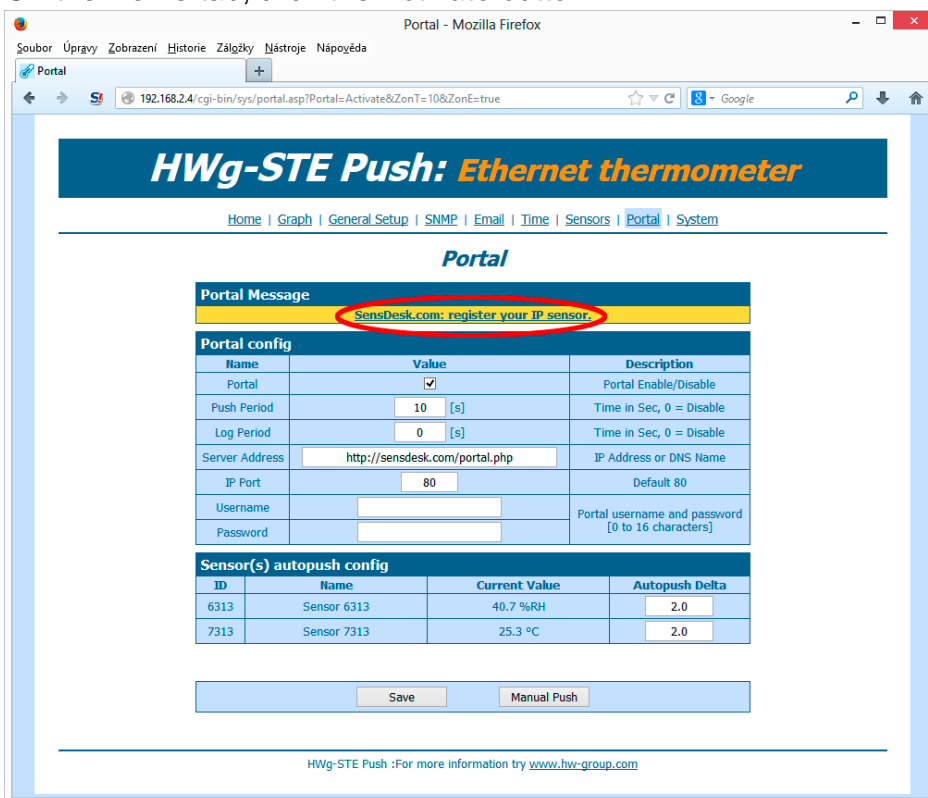
- 1) First connect the device to your network and set the network parameters (First Steps chapter in the user manual).



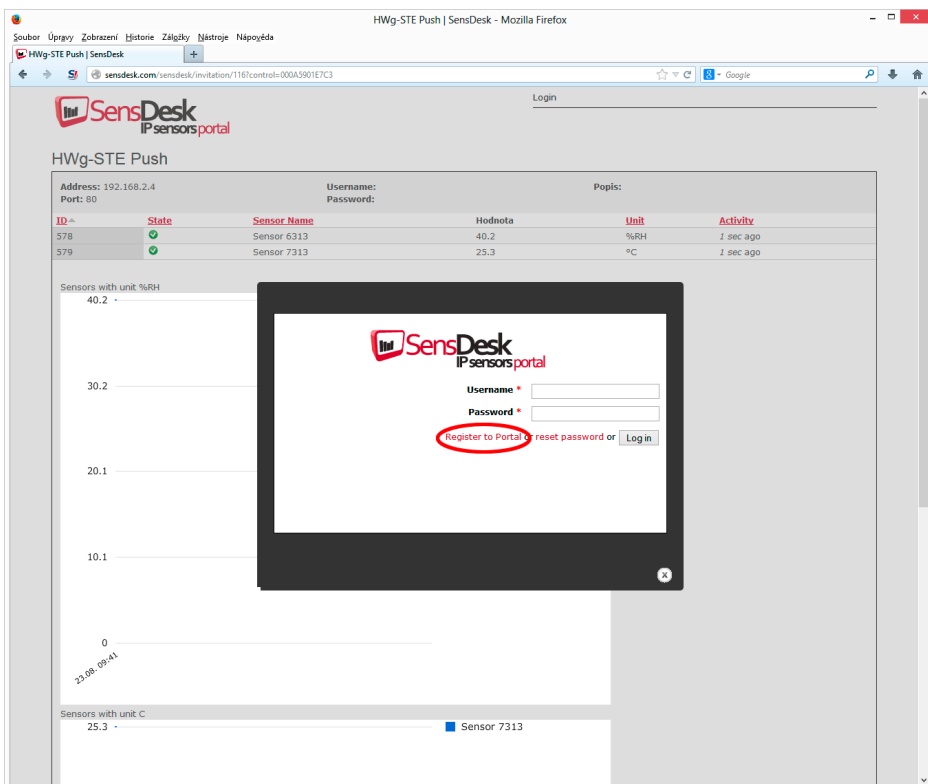
- 2) Then open the WWW setup of the device:



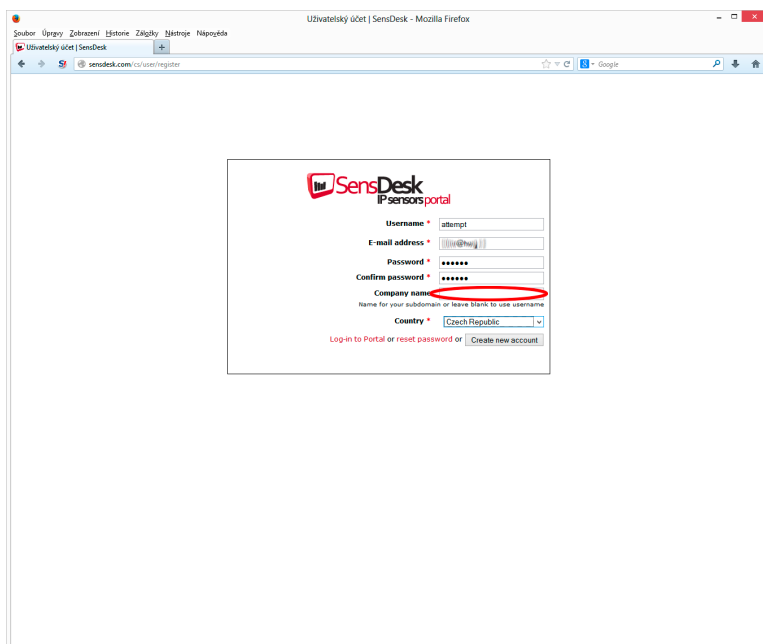
3) On the Home tab, click the *Activate* button.



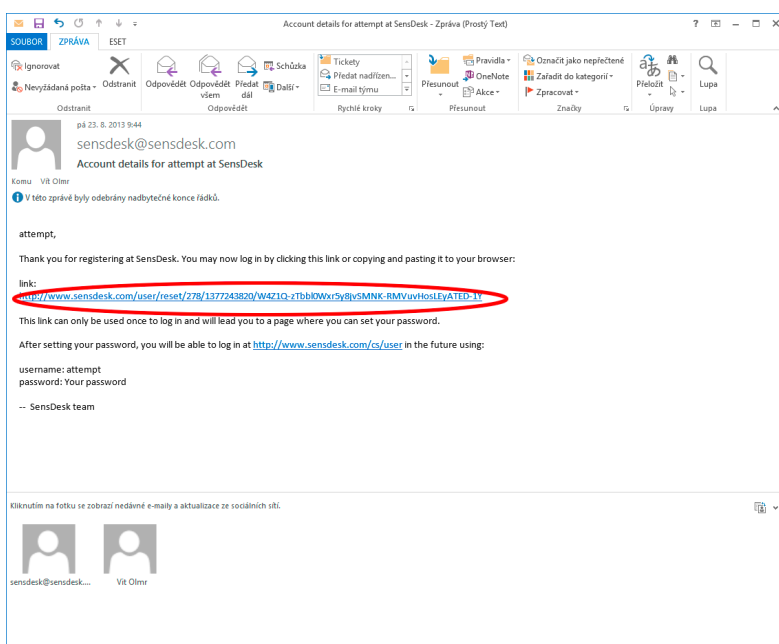
4) This will get you to the *Portal* tab and and by clicking the link *SensDesk.com: register your IP sensor* there, you will get to login page on SensDesk.com



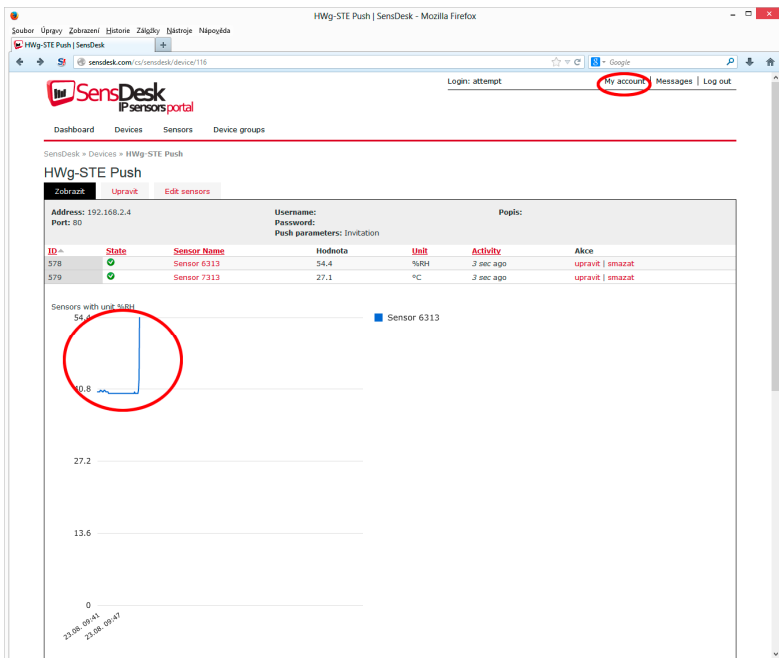
- 5) In case you already have a user account, please enter your login details and the device will be automatically assigned to your account. If you do not have a SensDesk account yet, click the *Register to Portal* link and a registration form will be shown.



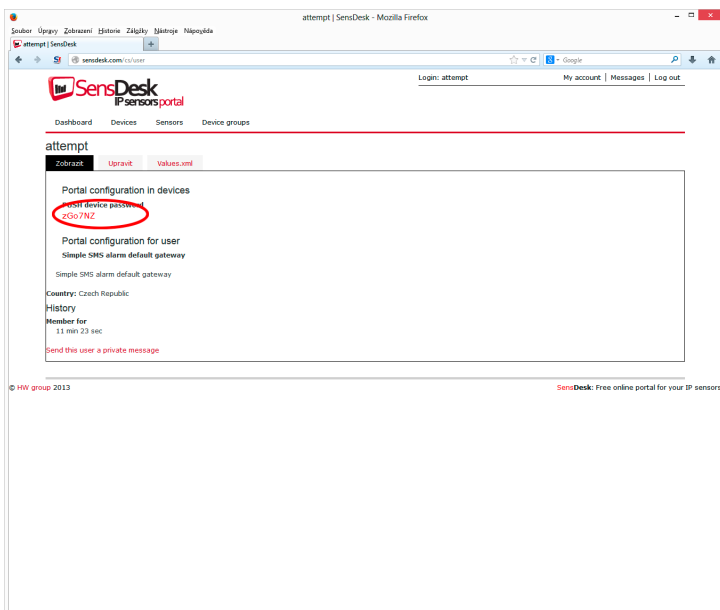
- 6) Enter the login details for your new account and a correct e-mail address. This e-mail address has to be unique for the server (cannot be already registered by another user). *Company name* allows you to create your own 3rd level domain (usually *company.sensdesk.com*). A user name will be used if the *Company name* field is left empty. After clicking the *Create new account* button, a user account will be created and at the same time a confirmation email is sent to the entered e-mail address. This e-mail contains a confirmation link which has to be used in order to activate the account.



- 7) By activating the account, you will be redirected to the *Invitation page* of the device. At this moment, the data sending period is set to 10 seconds to show the sensors functionality. This page is active only for approximately 15 minutes after the activation, then the logging period changes to 15 minutes.



- 8) If you check your user account configuration (*My Account* link), you will find your *Push Device Password*. This password, together with your login name, identifies the the device in communication with your account and in communication of mobile applications with SensDesk. The password cannot be changed and for a security reason it is different to the login password.



- 9) PUSH Device Password can be used in devices to skip the logging procedure during assigning the device to your portal account, or in mobile applications:

The image shows two parts: a web browser window on the left and a mobile app interface on the right.

**Web Browser Window:** The browser displays the 'Portal' configuration page for 'HWg-STE Push: Ethernet thermometer'. The page includes a 'Portal Message' section with a link to 'SensDesk.com, Check sensor online.' Below this is a 'Portal config' table with fields for Name, Value, and Description. The 'Push Period' is set to 30 [s], 'Log Period' to 10 [s], and 'Server Address' to 'http://sensdesk.com/portal.php'. The 'IP Port' is 80. The 'Username' is 'attent' and the 'Password' is '\*\*\*\*\*'. Below the config table is a 'Sensor(s) autopush config' table with columns for ID, Name, Current Value, and AutoPush Delta. The 'AutoPush Delta' is set to 2.0. There are 'Save' and 'Manual Push' buttons at the bottom.

**Mobile App Interface:** The app is titled 'HWg-Sensors' and shows a 'Group: Doma' dropdown. It has two tabs: 'ALL' and 'ALARMS'. The 'ALARMS' tab is active, showing a list of sensors with their current values and descriptions. The list includes various sensors like 'Vitek Doma' with values like 84, 38, 58, 0.7 A, 0.405 A, 0.441 A, 2.594 A, 4448.557 kWh, 23820.9 kWh, and 4136442 Wh. The 'ALARMS' tab is highlighted in red.

Portal function periodically sends the data to a remote server and the sending period is set by this server.

AutoPush is a function allowing unusual measured data sending, beside the periodical logging, in case that the value change is higher than the AutoPush delta parameter.